

WELCOME TO

# 130 Beare Trail

[www.130Beare.com](http://www.130Beare.com)



**Marek Kloda**  
Broker



TEAM **ZOLD**

Your Home • Your Life • Your Realtors

*Working For You!*

905.731.2000  
[www.teamzold.com](http://www.teamzold.com)

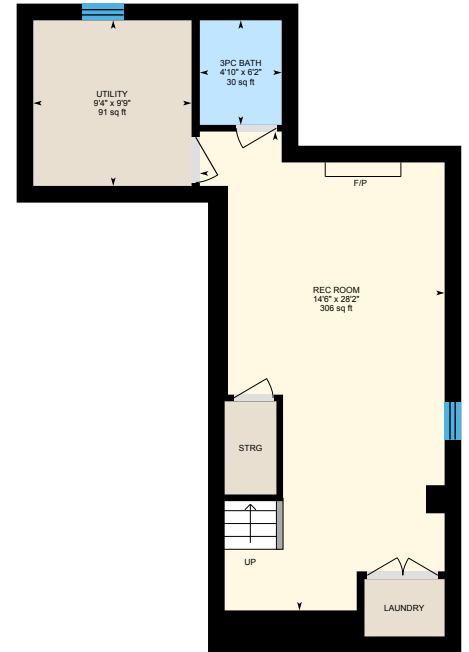
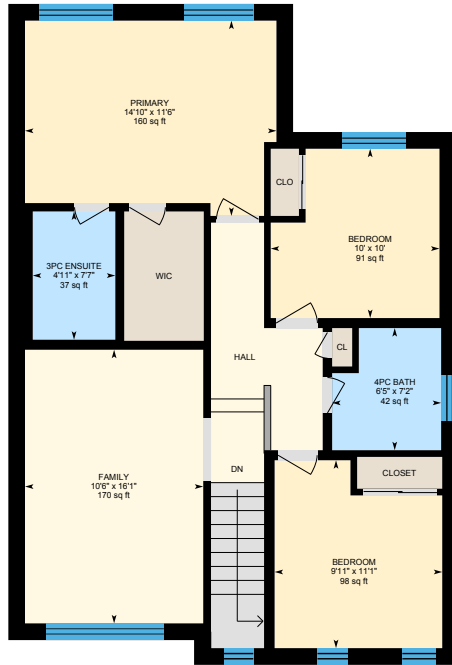


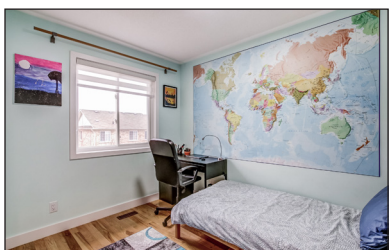
ROYAL LEPAGE  
**CHAIRMAN'S CLUB**  
NATIONAL TOP 1%  
LIFETIME MEMBER



**Shawn Zigelstein**  
Broker

# 130 Beare Trail, Newmarket





## PUBLIC SCHOOLS

Your neighbourhood is part of a community of Public Schools offering Elementary, Middle, and High School programming.

### Poplar Bank PS

Designated Catchment School  
Grades 2 to 8  
400 Woodspring Ave

### Dr John M Denison SS

Designated Catchment School  
Grades 9 to 12  
135 Bristol Rd

### Alexander Muir PS

Designated Catchment School  
Grades PK to 8  
75 Ford Wilson Blvd

### ÉS Norval-Morrisseau

Designated Catchment School  
Grades 7 to 12  
51 Wright St

## CATHOLIC SCHOOLS

Your neighbourhood is part of a community of Catholic Schools offering Elementary, Middle, and High School programming.

### Canadian Martyrs Catholic ES

Grades PK to 8 (Assigned)  
170 London Rd

### ÉÉC Jean-Béliveau

Grades PK to 6 (Assigned)  
19300 2nd Concession Rd

### Sacred Heart Catholic HS

Grades 9 to 12 (Assigned)  
908 Lemar Rd

### ÉSC Renaissance

Grades 7 to 12 (Assigned)  
700 Bloomington Rd

## PRIVATE SCHOOLS

The private schools nearest to you are:



### Pickering College

Grades PK to 12  
16945 Bayview Ave

### Country Garden Montessori Academy

Grades PK to 12  
601 Newpark Blvd

### Newmarket & District Christian Academy

Grades K to 8  
221 Carlson Dr

### Innova Academy

Grades PK to 8  
1000 Gorham St

## PARKS & REC.

This home is located in park heaven, with 4 parks and a long list of recreation facilities within a 20 minute walk from this address.



### Environmental Park

332 Woodspring Ave



3 min



### Woodland Hill Labyrinth Park

45 Ford Wilson Boulevard



7 min



### Bonshaw Avenue Park

126 Bonshaw Ave



6 min

### FACILITIES WITHIN A 20 MINUTE WALK

4 Playgrounds      3 Sports Fields  
1 Basketball Court      2 Trails  
1 Amphitheatre      1 Multi-Use Pad  
1 Picnic Facilities



## TRANSIT

Public transit is at this home's doorstep for easy travel around the city. The nearest street transit stop is only a 2 minute walk away and the nearest rail transit stop is a 32 minute walk away.



### Nearest Rail Transit Stop

Newmarket GO



### Nearest Street Level Transit Stop

Woodspring Av / Alfred Smith Way



2 min

## SAFETY

With safety facilities in the area, help is always close by. Facilities near this home include a fire station, a hospital, and a police station within 3.03km.



### Southlake Regional Health Centre

596 Davis Dr



### Fire Station

125 McCaffrey Rd



### Police Station

240 Prospect Street

## CONVENIENCE

This home is located near everyday amenities to make your daily errands easier.



### Coffee



### Gym



### Grocery



### Gas Station



HoodQ

Disclaimer: These materials have been prepared for shawn@pearsonold.com and are not intended to solicit buyers or sellers currently under contract with a brokerage. By accessing this information you have agreed to our terms of service, which are hereby incorporated by reference. This information may contain errors and omissions. You are not permitted to rely on the contents of this information and must take steps to independently verify its contents with the appropriate authorities (school boards, governments etc.). As a recipient of this information, you agree not to hold us, our licensors or the owners of the information liable for any damages, however caused.

## AMAZING SEMI-DETACHED 3 BDRM HOME WITH EUROPEAN STYLE UPGRADES IN WOODLAND HILLS AREA OF NEWMARKET!

Over \$150K in Renos and Upgrades!!! Smooth Ceilings, Freshly Painted, Tons of Potlights, European Style Kitchen with Luxor Cabinets, Quartz Countertop, Glass Backsplash and Stainless-Steel Bosch Appliances, Engineered Hardwood on Main and Hardwood on 2nd Floor, New Light Fixtures, Upgraded Bathrooms with Hanging Vanities, Glass Showers and Heated Floor in Master Ensuite, Spectacular, 2018 Finished Basement with Gas Fireplace & Remote Thermostat, Basement Laundry, European Baseboards, Trims and Doors!!! Centrally Located Near Upper Canada, All Shopping and Walking Distance to Park and Riding Trails!!! Only Few Minutes from Schools and HWY 400 & 404!!! Do Not Miss This Lovely Home!

### Extras:

All Existing Appliances; 2021 New Stainless Steel Bosch Appliances (36" French Door Bosch Fridge with Bottom Freezer, 30" Bosch Induction Cook Top, 30" Bosch Wall Oven, 24" Bosch Built-In Dishwasher, Bosch Over The Oven Microwave with Vent), All Window Coverings, All Electrical Light Fixtures, Front Load Electrolux Washer/Dryer, Hot Water Tank, Water Softener and Reverse Osmosis System, Lennox Furnace, AC, Gas Fireplace with Thermostat, Wiring for 5.1 Surround Sound (Main Floor and Basement), Sound Insulated Ceiling in the Basement, Nest Smoke Detectors, Garden Shed.

Exclusions: All TVs & Wall Mounts, All Wired Speakers, Garage Freezer.

Lot: 30 Ft x 82 Ft | Taxes: \$3,924.00/ 2021

Royal LePage Your Community Realty Brokerage does not warrant or guarantee the information in this feature sheet.