

127 Alfred Smith Way

www.127AlfredSmith.com



Your Community
REALTY
ROYAL LEPAGE
BROKERAGE INDEPENDENTLY OWNED & OPERATED

Marek Kloda
Broker

TEAM **ZOLD**

Your Home • Your Life • Your Realtors

Working For You!

905.731.2000
www.teamzold.com



ROYAL LEPAGE
CHAIRMAN'S CLUB
NATIONAL TOP 1%
2012-2020

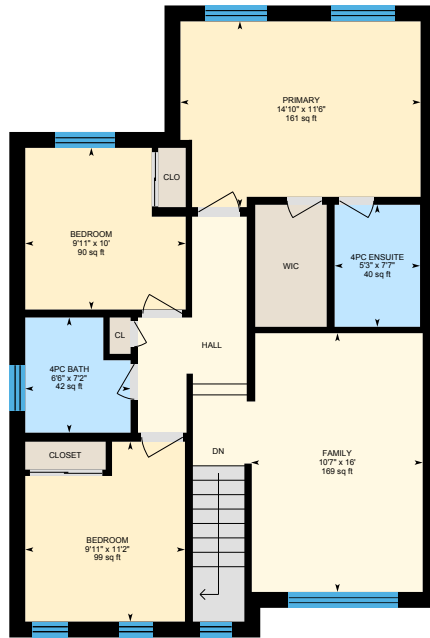
Shawn Zigelstein
Broker



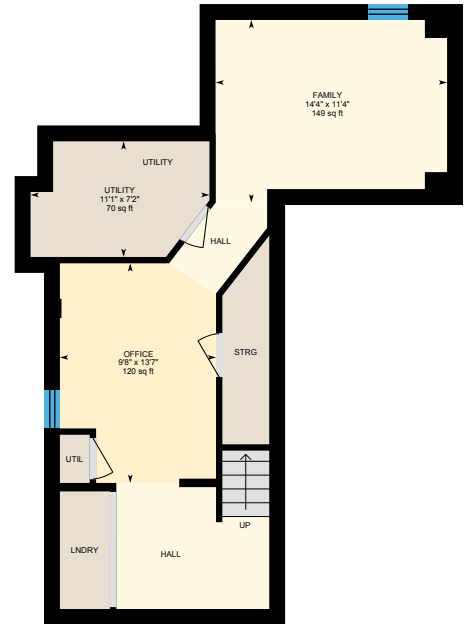
127 Alfred Smith Way, Newmarket



Main Floor



2nd Floor



Basement (Below Grade)





PUBLIC SCHOOLS

Your neighbourhood is part of a community of Public Schools offering Elementary, Middle, and High School programming.

Poplar Bank PS

Designated Catchment School
Grades 1 to 8
400 Woodspring Ave

Dr John M Denison SS

Designated Catchment School
Grades 9 to 12
135 Bristol Rd

Alexander Muir PS

Designated Catchment School
Grades PK to 8
75 Ford Wilson Blvd

ÉSC Norval-Morrisseau

Designated Catchment School
Grades 7 to 12
51 Wright St

ALTERNATIVE & SPECIAL SCHOOLS

Nearby alternative and special education schools include:

The Lighthouse Learning and Development

Grades K to 12
219 Old Yonge St

The Lighthouse Learning and Development

Grades K to 12
219 Old Yonge St

CATHOLIC SCHOOLS

Your neighbourhood is part of a community of Catholic Schools offering Elementary, Middle, and High School programming.

Canadian Martyrs Catholic ES

Grades PK to 8 (Assigned)
170 London Rd

ÉEC Jean-Béliveau

Grades PK to 6 (Assigned)
19300 2nd Concession Rd

Sacred Heart Catholic HS

Grades 9 to 12 (Assigned)
908 Lemar Rd

ÉSC Renaissance

Grades 7 to 12 (Assigned)
700 Bloomington Rd

PRIVATE SCHOOLS

The private schools nearest to you are:



Pickering College

Grades PK to 12
16945 Bayview Ave

Country Garden Montessori Academy

Grades PK to 12
601 Newpark Blvd

Newmarket & District Christian Academy

Grades K to 8
221 Carlson Dr

Innova Academy

Grades PK to 8
1000 Gorham St

PARKS & REC.

This home is located in park heaven, with 4 parks and a long list of recreation facilities within a 20 minute walk from this address.



Environmental Park

332 Woodspring Ave



2 min

Bonshaw Avenue Park

126 Bonshaw Ave



5 min

Woodland Hill Labyrinth Park

45 Ford Wilson Boulevard



7 min

FACILITIES WITHIN A 20 MINUTE WALK

4 Playgrounds	4 Sports Fields
2 Basketball Courts	1 Splash Pad
2 Trails	1 Amphitheatre
1 Multi-Use Pad	2 Picnic Facilities

TRANSIT

Public transit is at this home's doorstep for easy travel around the city. The nearest street transit stop is only a minute walk away and the nearest rail transit stop is a 32 minute walk away.

Nearest Rail Transit Stop

Newmarket GO

Nearest Street Level Transit Stop

Woodspring Av / Alfred Smith Way



1 min

SAFETY

With safety facilities in the area, help is always close by. Facilities near this home include a fire station, a hospital, and a police station within 3.09km.

Southlake Regional Health Centre

596 Davis Dr

Fire Station

125 McCaffrey Rd

Police Station

240 Prospect Street

CONVENIENCE

This home is located near everyday amenities to make your daily errands easier.

Coffee



Gym



Grocery



Gas Station



HoodQ

Disclaimer: These materials have been prepared for shawn@teamzold.com and are not intended to solicit buyers or sellers currently under contract with a brokerage. By accessing this information you have agreed to our terms of service, which are hereby incorporated by reference. This information may contain errors and omissions. You are not permitted to rely on the contents of this information and must take steps to independently verify its contents with the appropriate authorities (school boards, governments etc.). As a recipient of this information, you agree not to hold us, our licensors or the owners of the information liable for any damages, howsoever caused.

AMAZING SEMI IN PRIME WOODLAND HILLS WITH FINISHED BASEMENT

This Home Has Been Loved And Upgraded By The Owners And Is Ready For You To Move Right In. Wonderful Landscaping, Hardwood Floors, Crown Moldings, Rod Iron Pickets, A Professionally Finished Basement And So Many More Updates Have All Been Added In To This Great Family Home To Bring It To A 10++.

Close To Schools, Parks, Trails, Conservation, Public Transit, Shopping, And Other Amenities.

Extras: All Electrical Light Fixtures, All Window Coverings, All Existing Appliances: Whirlpool Stainless Steel Built-In Dishwasher, Whirlpool Stainless Steel Built-In Microwave, LG Stainless Steel French Door Fridge, Whirlpool Stainless Steel Flat Top Stove, LG Grey Washer And Dryer, Stairs With Wrought Iron Pickets, Garage Door Opener And Remotes, Keypad On Garage, CVAC And All Attachments, NEST Thermostat, Furnace, A/C, Water Softener, Alarm (Not Monitored), Playhouse In The Backyard.

Excluded: Freezer And Shelves In The Basement, All TV Mounts, String Lights In The Backyard.

Rental: Hot Water Tank.

Taxes: \$3,894.61/2021 | Lot: 31.27 ft x 82.02 ft