

WELCOME TO

119 Ruggles Ave.

www.119Ruggles.com



ROYAL LEPAGE
CHAIRMAN'S CLUB
NATIONAL TOP 1%
2012-2020

Shawn Zigelstein
Broker

TEAM **ZOLD**

Your Home • Your Life • Your Realtors

Working For You!

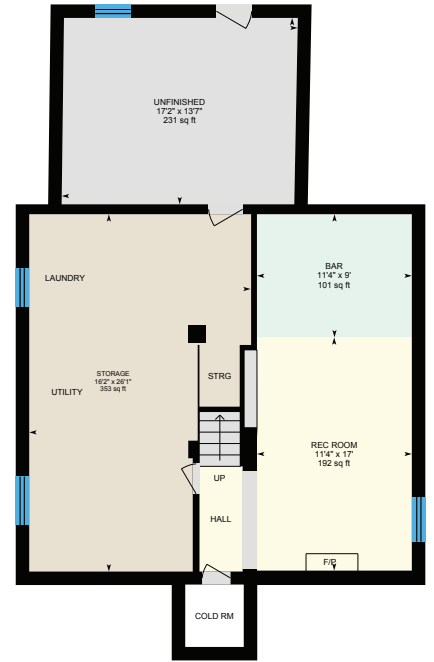
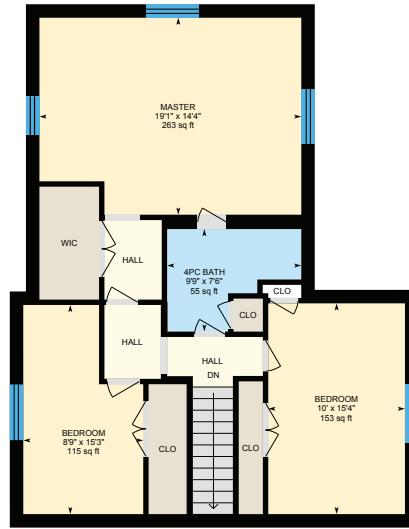
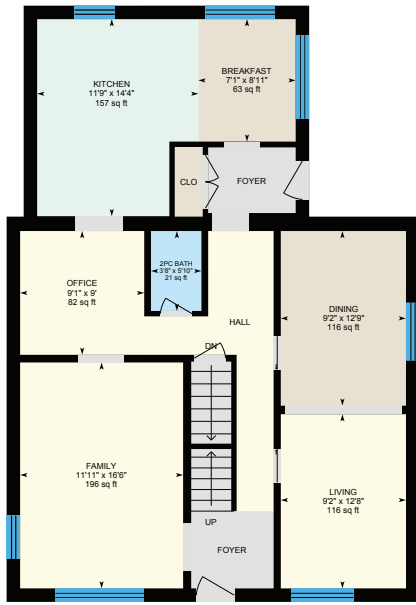
905.731.2000
www.teamzold.com

Your **Community**[™]
REALTY



BROKERAGE INDEPENDENTLY OWNED & OPERATED

119 Ruggles Ave, Richmond Hill





PUBLIC SCHOOLS

Your neighbourhood is part of a community of Public Schools offering Elementary, Middle, and High School programming.

Walter Scott PS

Designated Catchment School
Grades PK to 8
500 Major Mackenzie Dr E

Michaëlle Jean PS

Designated Catchment School
Grades 1 to 3
320 Shirley Dr

ÉS Norval-Morrisseau

Designated Catchment School
Grades 7 to 12
51 Wright St

Beverley Acres PS

Designated Catchment School
Grades 4 to 8
283 Neal Dr

Académie de la Moraine

Designated Catchment School
Grades PK to 6
115 George St

Alexander MacKenzie HS

Designated Catchment School
Grades 9 to 12
300 Major MacKenzie Dr W

ALTERNATIVE & SPECIAL SCHOOLS

Nearby alternative and special education schools include:

YRDSB Continuing Education

Grades 9 to 12
11160 Yonge St



CATHOLIC SCHOOLS

Your neighbourhood is part of a community of Catholic Schools offering Elementary, Middle, and High School programming.

Our Lady Help of Christians Catholic ES

Grades PK to 8 (Assigned)
275 Redstone Rd

ÉEC Le-Petit-Prince

Grades PK to 6 (Assigned)
79 Avro Rd

Our Lady Queen of the World Catholic Academy

Grades 9 to 12 (Assigned)
10475 Bayview Ave

ÉSC Renaissance

Grades 7 to 12 (Assigned)
700 Bloomington Rd

PRIVATE SCHOOLS

The private schools nearest to you are:



Discovery Academy

Grades K to 12
10030 Yonge St

Richmond Hill Montessori Elementary School

Grades PK to 8
189 Weldrick Rd E

Quantum Academy

Grades 1 to 12
9555 Yonge St

Richmond Hill Christian Academy

Grades K to 10
9711 Bayview Ave

PARKS & REC.

This home is located in park heaven, with 4 parks and a long list of recreation facilities within a 20 minute walk from this address.



Town Park / Elgin Barrow Arena

43 Church St S



4 min

Unity Park

63 Dunsmore Crescent



5 min

FACILITIES WITHIN A 20 MINUTE WALK

2 Playgrounds	3 Tennis Courts
2 Basketball Courts	1 Bell Diamond
2 Rinks	1 Arena
1 Community Centre	1 Trail
2 Picnic Facilities	1 Gym
1 Stage	



TRANSIT

Public transit is at this home's doorstep for easy travel around the city. The nearest street transit stop is only a 2 minute walk away and the nearest rail transit stop is a 7 minute walk away.

Nearest Rail Transit Stop
Richmond Hill GO 7 min

Nearest Street Level Transit Stop
Major Mackenzie Dr / Baker Av 2 min

SAFETY

With safety facilities in the area, help is always close by. Facilities near this home include a police station, a fire station, and a hospital within 1.37km.

Mackenzie Richmond Hill Hospital
10 Trench St

Fire Station
191 Major Mackenzie Drive West

Police Station
171 Major Mackenzie Drive West

CONVENIENCE

This home is located near everyday amenities to make your daily errands easier.

Coffee **Gym**
 Grocery **Gas Station**



Disclaimer: These materials have been prepared for use on the hoodq.com and are not intended to solicit business or create an offer in any jurisdiction. By accessing this information you have agreed to our terms of service, which is hereby incorporated by reference. This information may contain errors and omissions. They are not guaranteed to be true or complete. All information is subject to change without notice. For more information, please contact us at 1-877-333-3333. As a recipient of this information, you agree not to hold us, our licensors or the source of the information liable for any damages, however caused.

WONDERFULLY MAINTAINED OPPORTUNITY FOR END USERS/INVESTORS/BUILDERS

This Home Can Be So Many Amazing Things For So Many People. Move Right In And Enjoy This Well Cared For Renovated Home, Create An Amazing Income Producing Property, Or Build Your Dream Home In Prime Richmond Hill On A 50 x 135 Private Lot. Something For Everyone Here. This Home Was Extended For Tons Of Extra Space With A Full Addition, Features A Lovely Design And Layout, And So Much More.

All Electrical Light Fixtures, All Window Coverings, All Existing Appliances: Frigidaire White Stove, Boan White Hood Fan, Kenmore White Fridge, Capril White Built-In Dishwasher, Breakfast Bar, Sunbeam Stainless Steel Fridge in Basement, Kenmore White Washer and Dryer, Woods White Chest Freeze, Furnace, Humidifier, CVAC and all attachments (As Is), Roof (2021),

Lot: 50.05 ft x 135.19 ft Taxes: \$5,421.49/2021

Royal LePage Your Community Realty Brokerage does not warrant or guarantee the information in this feature sheet.