

WELCOME TO

113-960 Glen Street



Sarah Norris
Sales Representative



TEAM **ZOLD**

Your Home • Your Life • Your Realtors

Working For You!

905.731.2000
www.teamzold.com

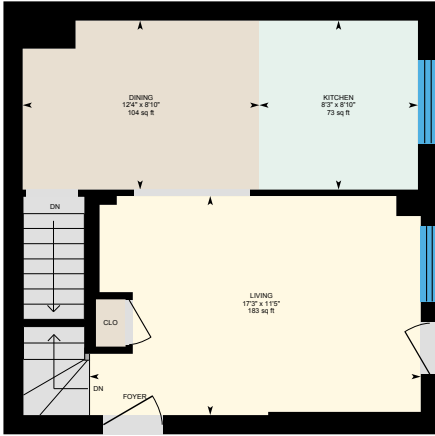


ROYAL LEPAGE
CHAIRMAN'S CLUB
NATIONAL
TOP 1%
LIFETIME MEMBER

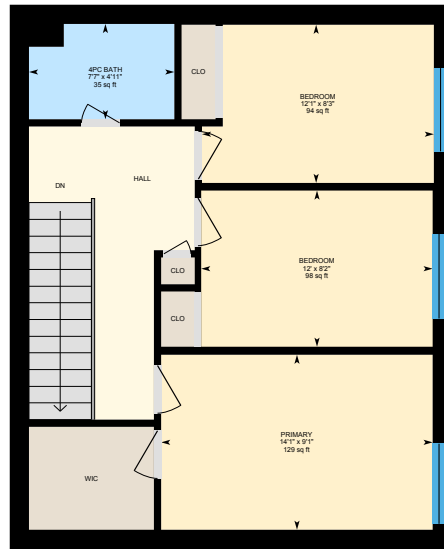


Shawn Zigelstein
Broker

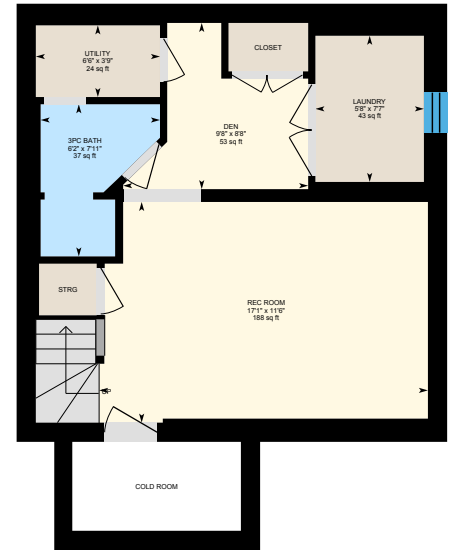
113-960 Glen Street, Oshawa



Main Floor



2nd Floor



Basement (Below Grade)





PUBLIC SCHOOLS

Your neighbourhood is part of a community of Public Schools offering Elementary, Middle, and High School programming.

Glen Street PS

Designated Catchment School
Grades PK to 8
929 Glen St

GL Roberts CVI

Designated Catchment School
Grades 9 to 12
399 Chaleur Ave

É Éléonore Maillet

Designated Catchment School
Grades PK to 6
615 Ridgeway Ave

ÉÉ Ronald-Marion

Designated Catchment School
Grades 7 to 12
2235 Brock Rd

CATHOLIC SCHOOLS

Your neighbourhood is part of a community of Catholic Schools offering Elementary, Middle, and High School programming.

Monsignor Philip Coffey
Catholic School

Grades PK to 6
1324 Oxford St

ÉÉC Corpus-Christi

Grades PK to 6
362 Hillside Ave

Monsignor John Pereyma
Catholic HS

Grades 7 to 12
316 Conant St

ÉSC Saint-Charles-Garnier

Grades 7 to 12
4101 Baldwin St S

PRIVATE SCHOOLS

The private schools nearest to you are:



Durham Academy

Grades 9 to 12
900 King St E

Great Beginnings
Montessori & Durham
Elementary Private School

Grades PK to 8
505 Adelaide Ave E

Kendalwood Montessori &
Elementary School

Grades PK to 8
104 Consumers Dr

Kingsway College Private
High School

Grades 9 to 12
1200 Leland Rd

PARKS & REC.

This home is located in park heaven, with 4 parks and 7 recreation facilities within a 20 minute walk from this address.



Cordova Valley Park

811 Glen St.

3 mins

Erie Park

43 Erie St.

8 mins

Cordova Park

787 Oxford St.

6 mins

FACILITIES WITHIN A 20 MINUTE WALK

1 Playground 1 Sports Field
1 Basketball Court 3 Trails

TRANSIT

Public transit is at this home's doorstep for easy travel around the city. The nearest street transit stop is only a minute walk away and the nearest rail transit stop is a 31 minute walk away.

Nearest Rail Transit Stop
Oshawa

Nearest Street Level Transit Stop
Glen Northbound at Medina

1 min

SAFETY

With safety facilities in the area, help is always close by. Facilities near this home include a police station, a fire station, and a hospital within 3.94km.

Lakeridge Health - Oshawa Site
1 Hospital Crt

Fire Station
1111 Simcoe Street South

Police Station
1173 Cedar Street



HoodQ

Disclaimer: These materials have been prepared for shawn@teamzold.com and are not intended to solicit buyers or sellers currently under contract with a brokerage. By accessing this information you have agreed to our terms of service, which are hereby incorporated by reference. This information may contain errors and omissions. You are not permitted to rely on the contents of this information and must take steps to independently verify its contents with the appropriate authorities (school boards, governments etc.). As a recipient of this information, you agree not to hold us, our licensors or the owners of the information liable for any damages, howsoever caused.

LOCATION AND COMFORT!! Welcome Home! This 3-Bedroom, 2-Bathroom, 2-Storey Family Home Has Been Pretty Much Renovated Top To Bottom Over The Past Four Years, Including Updates To The Electrical, Plumbing And Insulation. Completely Renovated Kitchen With New Cabinetry (Incl 2 Lazy Susans), New Appliances And Quartz Counter. You'll Find All New Flooring And Sub-Flooring Throughout (With Higher End Engineered Water-Proof Laminate), And A Newly Renovated Basement, Complete With Rec Room, Your 2nd Washroom, An Enclosed Laundry Area, And 2 Large Enclosed Storage Areas. The 2nd Floor Hosts 3 Large Bedrooms, And Renovated Bathroom. Walk Outside To A Relaxing Fenced-In Terrace That Includes A Netted Gazebo. During Those Hot Summer Days, Enjoy Your On-Site Outdoor Pool (With An On-Duty Lifeguard) And Playground. You Are Mere Steps To Glen Park Public School (Right Across The Street). You Are Surrounded By Walking Trails, Bike Trails, Parks And You Are Minutes To The Lake. Just A Block Up The Street Is Cordova Valley Park, With Its Splash Park, Dog Park, And Community Centre. Public Transit Is Also Steps Away. Close To All Imaginable Amenities, Including Oshawa Hospital, The GO Train (5 Min Drive), And Hwy 401 (3 Min Drive).

Extras: All Existing Appliances: Whirlpool Stainless Steel Fridge, Whirlpool Stainless Steel Stove, LG Rangehood/Microwave, White Kenmore Built-In Dishwasher, White Front Load Kenmore Washer and Dryer, All Electrical Light Fixtures & Ceiling Fans, All Window Coverings, Furnace, AC, Gazebo and Shed.

Rental: How Water Tank.

Excluded: Basement Freezer; Backyard Deck Box

Taxes: \$2,033.07/2024 | Maintenance Fees: \$518.00/month

Royal LePage Your Community Realty Brokerage does not warrant or guarantee the information in this feature sheet.