

WELCOME TO

— 1009 - 1103 Leslie Street —

www.TeamZold.com



Shawn Zigelstein
Broker



TEAM **ZOLD**

Your Home • Your Life • Your Realtors

Working For You!

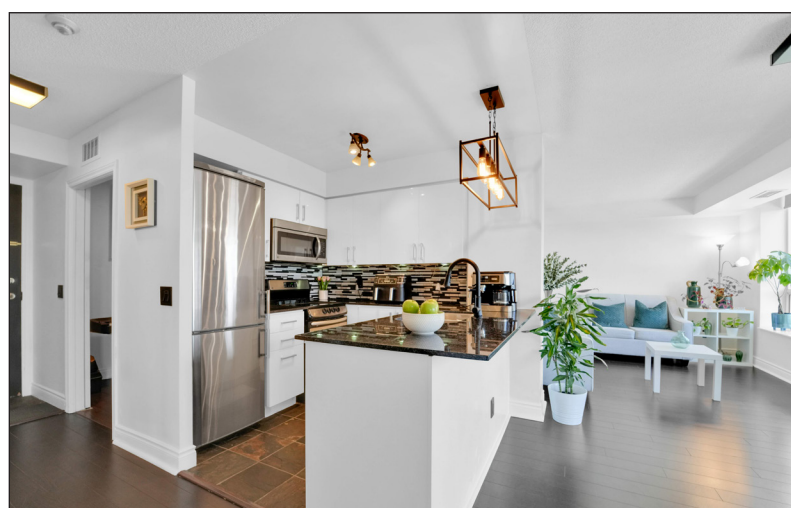
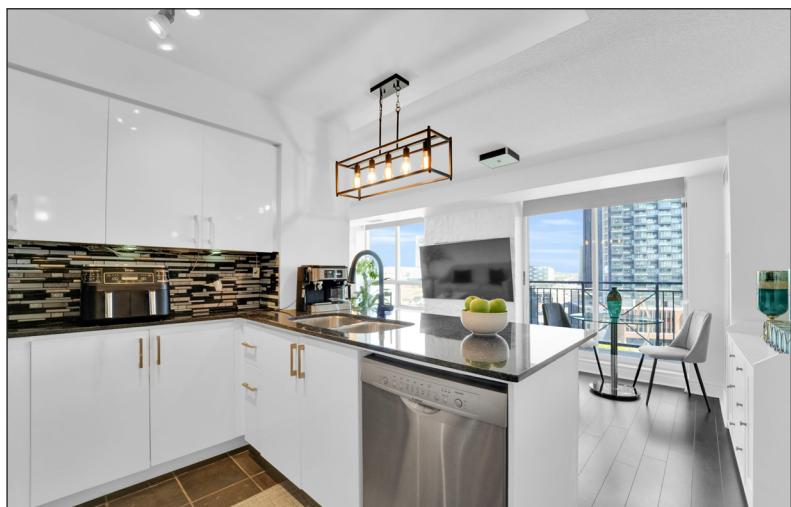
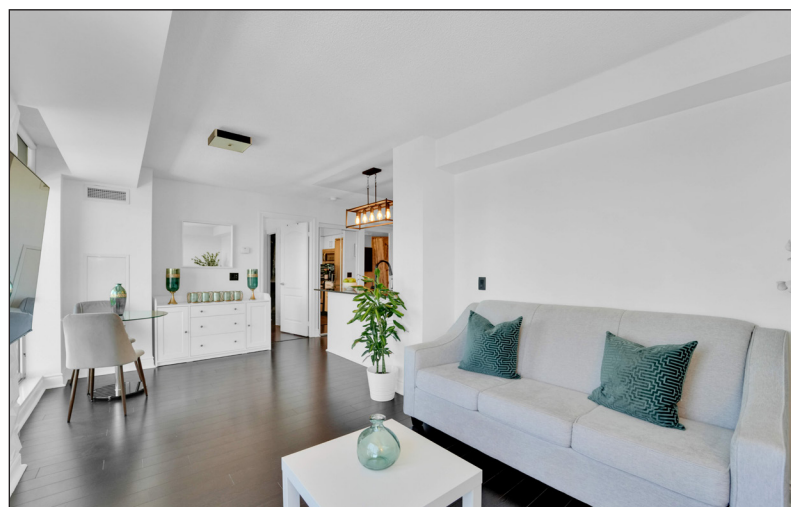
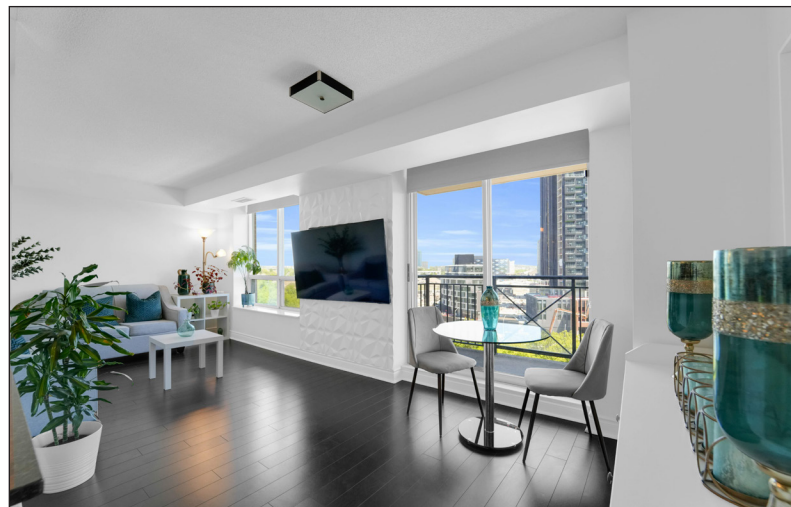
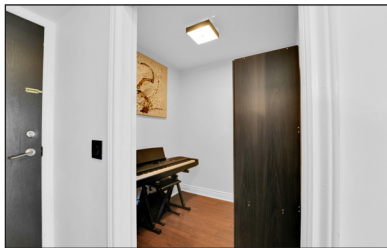
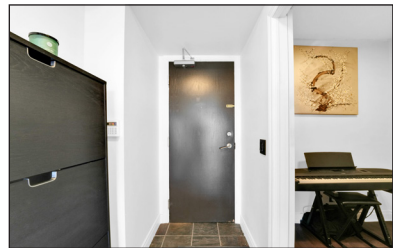
905.731.2000
www.teamzold.com

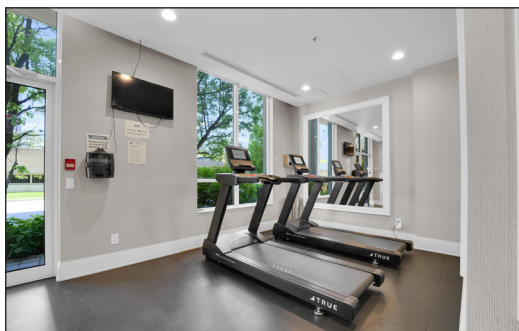


ROYAL LEPAGE
CHAIRMAN'S CLUB
NATIONAL
TOP 1%
LIFETIME MEMBER



Moe Taslimi
Sales Representative





1009 - 1103 Leslie Street, Toronto

PUBLIC SCHOOLS

Your neighbourhood is part of a community of Public Schools offering Elementary, Middle, and High School programming.

Rippleton Public School

Designated Catchment School
Grades PK to 5
21 Rippleton Rd

ÉE Jeanne-Lajoie

Designated Catchment School
Grades PK to 6
150 Carnforth Rd

Don Mills Middle School

Designated Catchment School
Grades 6 to 8
17 The Donway E

Don Mills Collegiate Institute

Designated Catchment School
Grades 9 to 12
15 The Donway E

ÉS Étienne-Brûlé

Designated Catchment School
Grades 7 to 12
300 Banbury Rd

Other Local Schools Broadlands Public School

Grades K to 5
106 Broadlands Blvd

ALTERNATIVE & SPECIAL SCHOOLS

Nearby alternative and special education schools include:

Park Lane Public School

Grades PK to 12
60 Park Ln Cir

Brighton School

Grades 1 to 12
150 Wynford Drive

CATHOLIC SCHOOLS

Your neighbourhood is part of a community of Catholic Schools offering Elementary, Middle, and High School programming.

St. Bonaventure Catholic School

Grades PK to 8
1340 Leslie St

ÉEC Sainte-Madeleine

Grades PK to 6
1 Ness Dr

Our Lady of Wisdom Catholic School

Grades PK to 8
10 Japonica Rd

ÉSC Monseigneur-de-Charbonnel

Grades 7 to 12
110 Drewry Ave

PRIVATE SCHOOLS

The private schools nearest to you are:

Maria Montessori School

Grades PK to 8
125 Brentcliffe Road

Seneca Hill Private School

Grades K to 12
33 Overland Drive

Children's Garden School

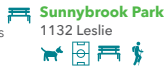
Grades PK to 3
670 Eglinton Avenue East

Crestwood School

Grades PK to 6
411 Lawrence Avenue East

PARKS & REC.

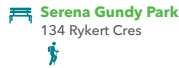
This home is located in park heaven, with 4 parks and a long list of recreation facilities within a 20 minute walk from this address.



Sunnybrook Park
1132 Leslie



2 mins



Serena Gundy Park
134 Rykert Cres



6 mins



Wilket Creek Park
1100 Leslie Ave



3 mins

FACILITIES WITHIN A 20 MINUTE WALK
1 Dog Park
2 Basketball Courts
12 Sports Fields
1 Skateboard Park
1 Equestrian Facility
5 Trails

TRANSIT

Public transit is at this home's doorstep for easy travel around the city. The nearest street transit stop is only a 2 minute walk away and the nearest rail transit stop is a 57 minute walk away.

 **Nearest Rail Transit Stop**
Eglinton Station

 **Nearest Street Level Transit Stop**
1103 Leslie St
 2 mins

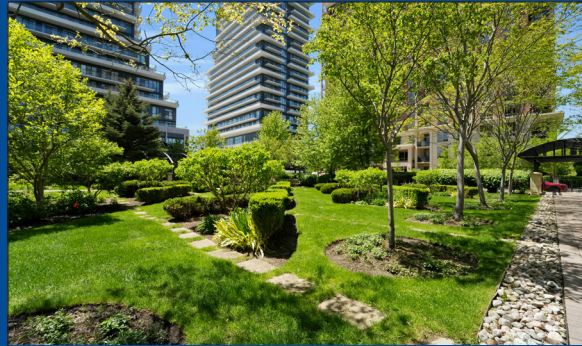
SAFETY

With safety facilities in the area, help is always close by. Facilities near this home include a fire station, a hospital, and a police station within 3.47km.

 **Sunnybrook Health Sciences Centre - Bayview Campus**
2075 Bayview Ave

 **Fire Station**
1109 Leslie St

 **Police Station**
50 Upjohn Rd



Disclaimer: These materials have been prepared for the HoodQ Homebuyer Hub and are not intended to solicit buyers or sellers currently under contract with a brokerage. By accessing this information you have agreed to our terms of service, which are hereby incorporated by reference. This information may contain errors and omissions. You are not permitted to rely on the contents of this information and must take steps to independently verify its contents with the appropriate authorities (school boards, governments etc.). As a recipient of this information, you agree not to hold us, our licensors or the owners of the information liable for any damages, howsoever caused.

Welcome To Carrington Place, Where Comfort Meets Convenience

Well-Appointed 1+1 Bedroom Condo With An Unobstructed East-Facing View. Wake Up Each Morning To The Serene Beauty Of Sunnybrook Park, One Of Toronto's Most Stunning Green Spaces, Visible Right From Your Window.

This Thoughtfully Designed Suite Offers Hardwood Flooring Throughout And A Bright Open-Concept Layout That Maximizes Natural Light. The Den Is Perfectly Sized For A Home Office, Providing A Quiet And Functional Workspace Ideal For Remote Work Or Study.

Step Out Onto Your Private Balcony And Take In The Peaceful, Panoramic Views — A Perfect Spot To Enjoy Your Morning Coffee Or Unwind At The End Of The Day. The East Exposure Ensures Beautiful Sunrises And A Sense Of Tranquility In Every Season.

Carrington Place Is Ideally Situated Close To Public Transportation, Including The TTC And The Upcoming Eglinton LRT, Making Commuting A Breeze. Enjoy Nearby Trails, Bike Paths, And Easy Access To Sunnybrook Park, Wilket Creek, And More.

Whether You're A Young Professional, Downsizer, Or First-Time Buyer, This Unit Offers The Perfect Blend Of Nature, City Living, And Everyday Convenience

Extras: All Existing Stainless Steel Appliances: Electrolux Fridge, Bosch Built-In Dishwasher, GE Microwave, GE Stove, All Electrical Light Fixtures, All Window Coverings, Parking and Locker.

Taxes: \$2,095.80 / 2024 | Maintenance Fees: \$918/month

Royal LePage Your Community Realty Brokerage does not warrant or guarantee the information in this feature sheet.