

WELCOME TO

8 Country Heights Drive

www.8CountryHeights.com



ROYAL LEPAGE
CHAIRMAN'S CLUB
NATIONAL TOP 1%
LIFETIME MEMBER

TEAM **ZOLD**

Your Home • Your Life • Your Realtors

Working For You!

www.teamzold.com

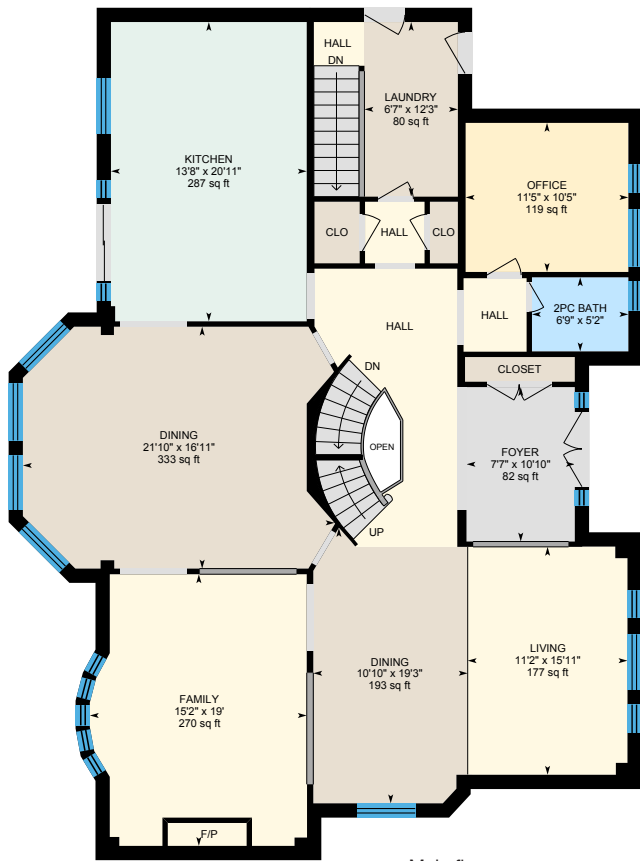
YOUR **Community**
REALTY™

ROYAL LEPAGE

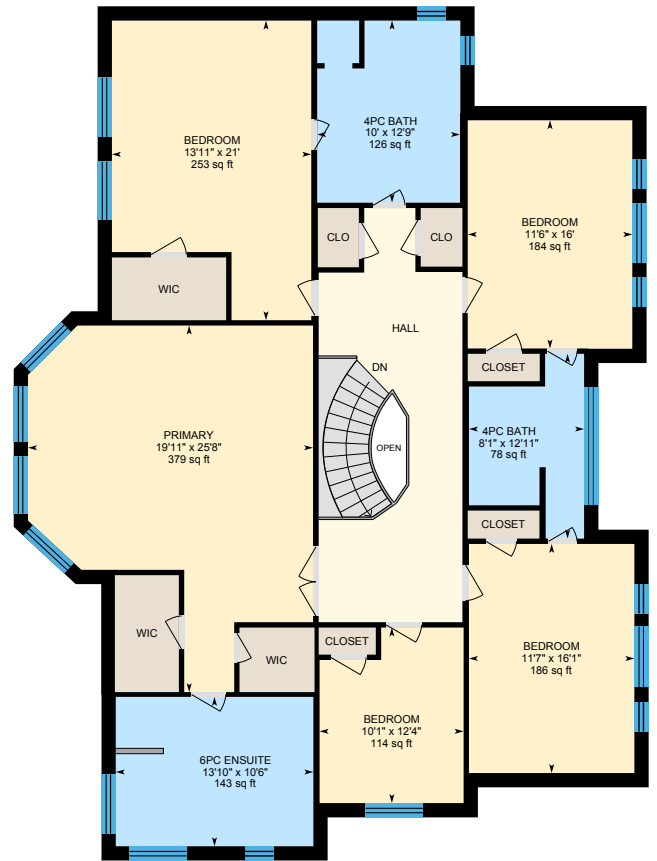
BROKERAGE INDEPENDENTLY OWNED & OPERATED

905.731.2000

8 Country Heights Dr, Richmond Hill



Main floor

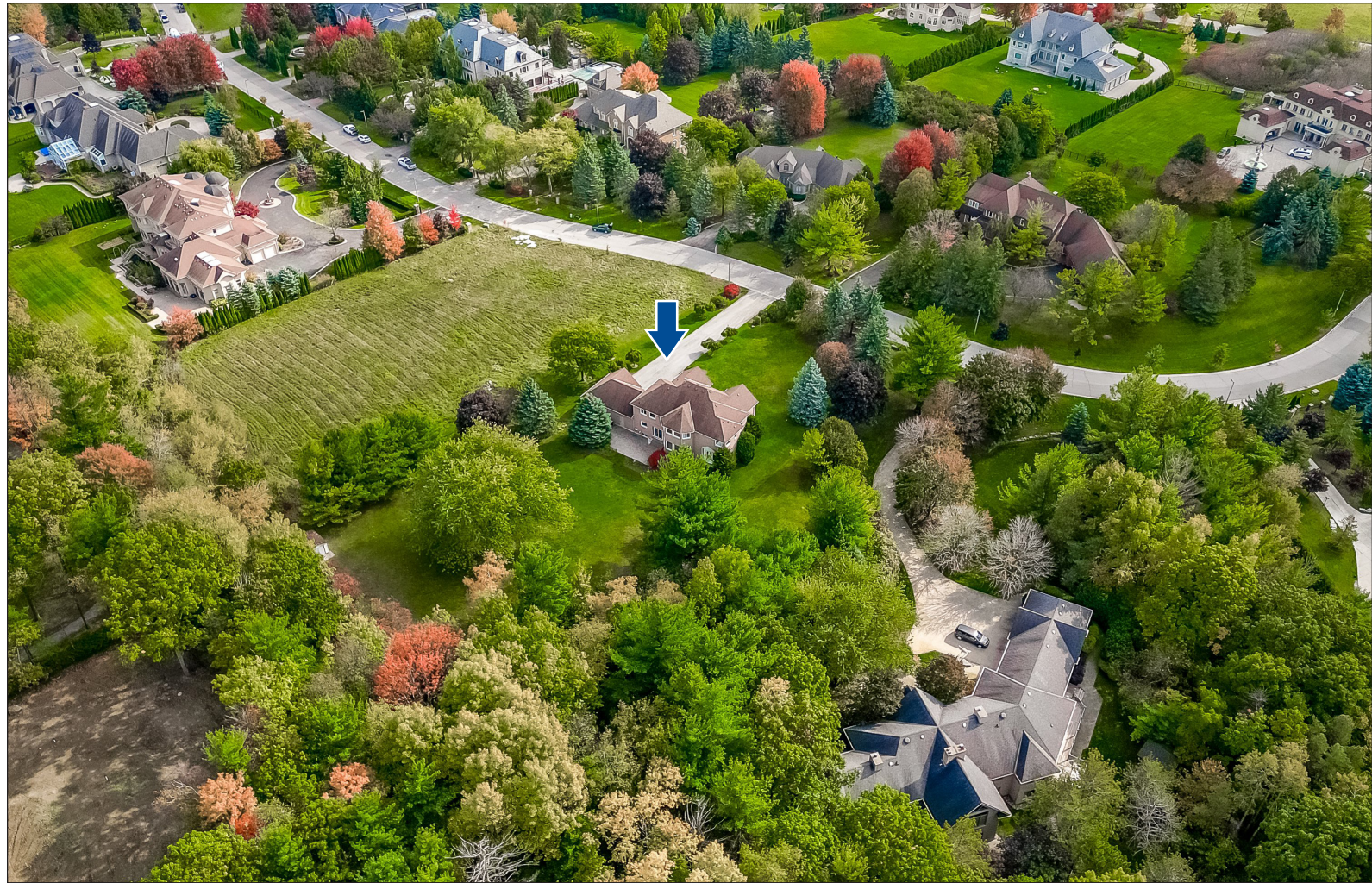


2nd floor













PUBLIC SCHOOLS

Your neighbourhood is part of a community of Public Schools offering Elementary, Middle, and High School programming.

Lake Wilcox PS

Designated Catchment School
Grades PK to 8
80 Wildwood Ave

Académie de la Moraine

Designated Catchment School
Grades PK to 6
115 George St

ÉS Norval-Morrisseau

Designated Catchment School
Grades 7 to 12
51 Wright St

Beynon Fields PS

Designated Catchment School
Grades 1 to 8
258 Selwyn Rd

Richmond Green SS

Designated Catchment School
Grades 9 to 12
1 William F. Bell Pkwy

ALTERNATIVE & SPECIAL SCHOOLS

Nearby alternative and special education schools include:

YRDSB Continuing Education

Grades 9 to 12
11160 Yonge St

Dr. Bette Stephenson Centre for Learning

Grades 9 to 12, Adult
36 Regatta Ave



CATHOLIC SCHOOLS

Your neighbourhood is part of a community of Catholic Schools offering Elementary, Middle, and High School programming.

Corpus Christi Catholic ES

Grades PK to 8
35 Squire Dr

ÉÉC Saint-Jean

Grades PK to 6
90 Walton Dr

Our Lady Queen of the World Catholic Academy

Grades 9 to 12
10475 Bayview Ave

ÉSC Renaissance

Grades 7 to 12
700 Bloomington Rd

PRIVATE SCHOOLS

The private schools nearest to you are:



Holy Trinity Private School

Grades PK to 12
11300 Bayview Ave

Richland Academy

Grades PK to 8
11570 Yonge St

Century Private School

Grades PK to 12
11181 Yonge St

TMS School - Elgin Mills

Grades 9 to 12
500 Elgin Mills Rd E



PARKS & REC.

This home is located in park heaven, with 3 parks and 8 recreation facilities within a 20 minute walk from this address.



Rocking Horse Ranch

200 Hunting Ridges Drive



12 mins



Snakes & Ladders Park

51A Mancini Crescent



17 mins



Poplar Forest Parkette

Marble Bridge Dr and Wolf Trail Ct



15 mins

FACILITIES WITHIN A 20 MINUTE WALK

3 Playgrounds
2 Tennis Courts

1 Basketball Court
2 Trails



TRANSIT

Public transit is at this home's doorstep for easy travel around the city. The nearest street transit stop is only a 3 minute walk away and the nearest rail transit stop is a 39 minute walk away.



Nearest Rail Transit Stop

Gormley GO



Nearest Street Level Transit Stop

Bayview Av / Worley Hall Gt



3 mins

SAFETY

With safety facilities in the area, help is always close by. Facilities near this home include a fire station, a police station, and a hospital within 6.18km.



Mackenzie Richmond Hill Hospital

10 Trench St



Fire Station

101 Gamble Road



Police Station

100 Bloomington Road



HoodQ

Disclaimer: These materials have been prepared for shawn@teamzold.com and are not intended to solicit buyers or sellers currently under contract with a brokerage. By accessing this information you have agreed to our terms of service, which are hereby incorporated by reference. This information may contain errors and omissions. You are not permitted to rely on the contents of this information and must take steps to independently verify its contents with the appropriate authorities (school boards, governments etc.). As a recipient of this information, you agree not to hold us, our licensors or the owners of the information liable for any damages, howsoever caused.

WELCOME TO THIS EXCEPTIONAL HOME LOCATED IN THE PRESTIGIOUS BAYVIEW COUNTRY ESTATES IN PRIME RICHMOND HILL

This Property Is Situated On A Sprawling 2-Acre Treed Lot, Surrounded By Multi-Million-Dollar Custom Homes, Offering An Atmosphere Of Exclusivity And Luxury. The Home Features A Great Open Concept Layout, Perfect For Modern Living And Entertaining. The Spacious Living Areas Flow Seamlessly Into Each Other, Creating A Sense Of Openness And Light. The Large Windows Throughout The Home Offer Stunning Views Of The Surrounding Greenery, Bringing A Touch Of Nature Indoors With A Serene Setting To Welcome The Deer And Wild Turkeys For A Visit. The Basement Is Unfinished, Providing A Blank Canvas For You To Customize According To Your Needs. Whether You Envision A Home Theater, Gym, Wine Cellar, Secondary In Law Suite With Separate Entrance, Or A Play Area For The Kids, The Possibilities Are Endless. The Home Has Been Meticulously Maintained By The Original Owners. This Home Offers A Unique Opportunity To Live In A Tranquil Setting While Being Close To All The Amazing Amenities Of Richmond Hill. Don't Miss Out On The Chance To Make This Your Dream Home! Close To Parks, Nature Trails, Golf And Highways.

All Existing Appliances: Panasonic White Built-In Microwave, Jenn-Air White Built-In Wall Oven, Sub-Zero White Built-In Fridge, Stainless Stelle Gas Cooktop, Faber Stainless Steel Built-In Hood Fan, Bosch Stainless Steel Built-In Dishwasher; LG White Washer and LG White Dryer, Oak Staircase, All Electrical Light Fixtures, Gas Fireplace, Water Filtration System, Water Softener, Furnace, Humidifier, AC, 3 Garage Door Openers, CVAC and Attachments, Alarm System (not monitored), Garden Shed.

Rental: Hot Water Tank

Lot: 1.95 Acre Lot Irregular 124.26ft (front) x 445.62ft (West) x 376.72ft (East) x 313.68ft (Rear) | Taxes: \$16,104.38/2023

Royal LePage Your Community Realty Brokerage does not warrant or guarantee the information in this feature sheet.