

# 89 Durie Lane

[www.89DurieLane.com](http://www.89DurieLane.com)



ROYAL LEPAGE  
**CHAIRMAN'S CLUB**  
NATIONAL TOP 1%  
2012-2017

## TEAM ZOLD

Your Home • Your Life • Your Realtors

*Working For You!*

**Shawn Zigelstein**  
Sales Representative

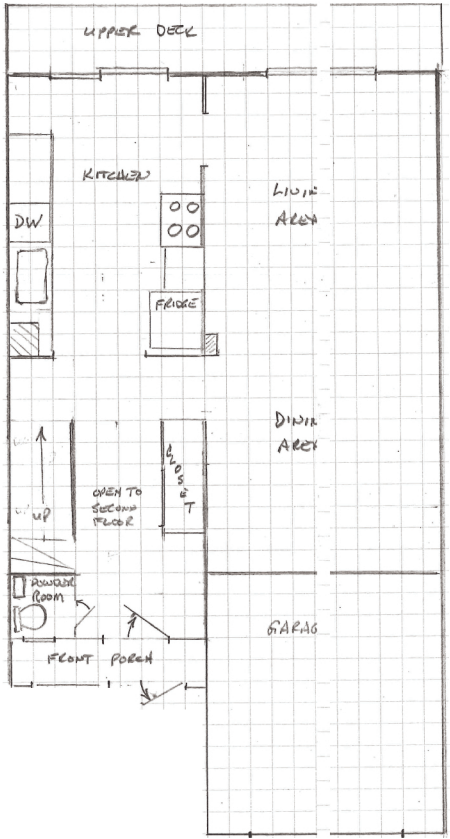
905.731.2000  
[www.teamzold.com](http://www.teamzold.com)

Your **Community**<sup>™</sup>  
REALTY

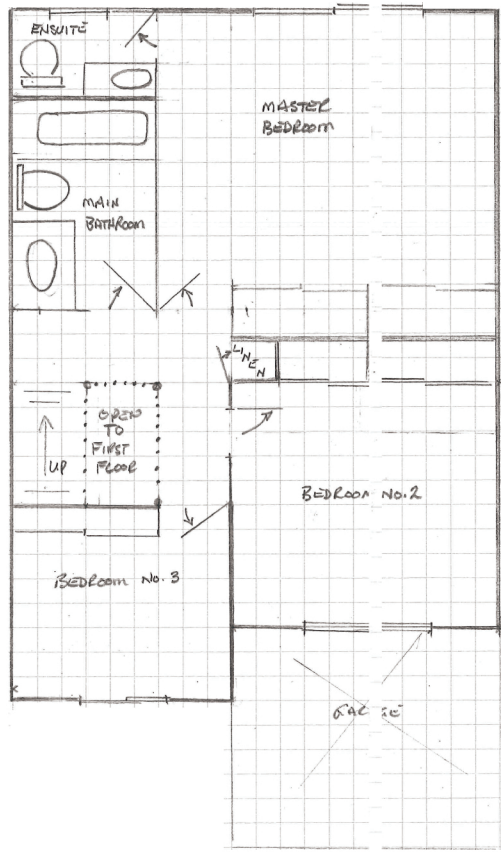


BROKERAGE INDEPENDENTLY OWNED & OPERATED

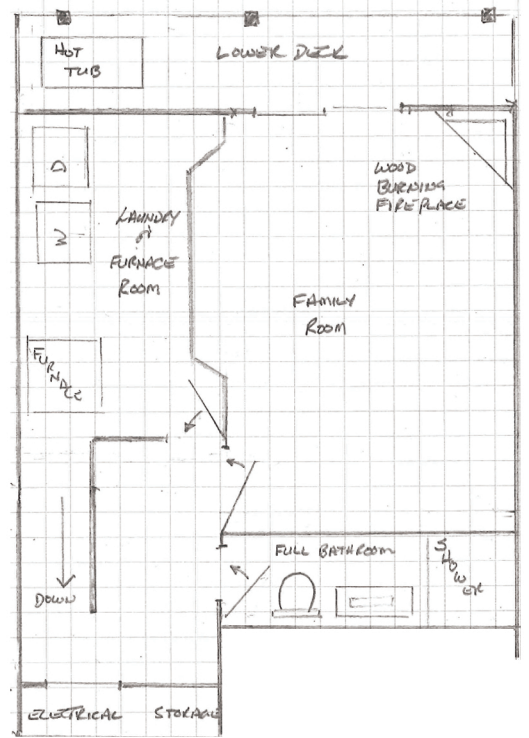
# FLOOR PLAN



Main Level

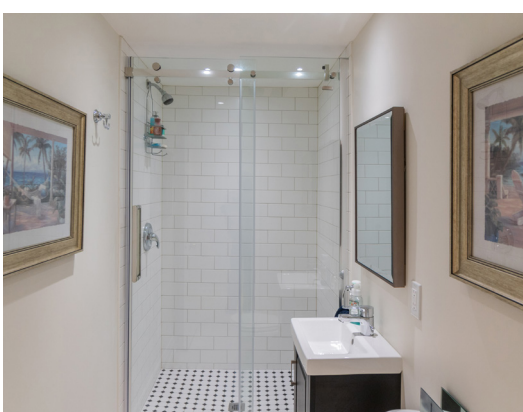


2nd Level



Lower Level







**89 Durie Ln**  
 Thornhill, ON  
 INTERACTIVE ADDRESS REPORT

**SCHOOLS**

**Nearby Schools**

With excellent public schools very close to this home, your kids will get a great education in the neighbourhood.



**Bayview Fairways PS**  
 Grades PK to 8  
 255 Bayview Fairways Dr  
 0.61 KM

**Johnsview Village PS**  
 Grades PK to 8  
 41 Porterfield Crescent  
 1.58 KM

**Thornlea SS**  
 Grades 9 to 12  
 8075 Bayview Ave  
 2 KM

**German Mills PS**  
 Grades PK to 8  
 61 Simonston Blvd  
 1.16 KM

**Bayview Glen PS**  
 Grades PK to 8  
 42 Limcombe Dr  
 1.61 KM

**PARKS & REC.**

This home is located in park heaven, with 4 parks and a long list of recreation facilities within a 20 minute walk from this address.

**German Mills Meadow and Natural Habitat**  
 John St  
 0.52 KM  
 7 min

**Green Lane Park**  
 Thorne Ln  
 0.55 KM  
 7 min

**Duncan Park**  
 265 John St  
 0.52 KM  
 7 min

**FACILITIES WITHIN A 20 MINUTE WALK**

- 3 Playgrounds
- 3 Tennis Courts
- 2 Ball Diamonds
- 1 Trail
- 3 Sports Fields
- 1 Basketball Court
- 1 Rink
- 2 Multi-Use Pads



**4 Parks**

**TRANSIT**

Public transit is at this home's doorstep for easy travel around the city. The nearest street transit stop is only a 4 minute walk away and the nearest rail transit stop is a 44 minute walk away.

**Nearest Rail Transit Stop**  
 Old Cummer GO Station Rail

**Nearest Street Level Transit Stop**  
 John St / Chestnut Gate



**SAFETY**

With safety facilities in the area, help is always close by. Facilities near this home include a fire station, a hospital, and a police station within 6.43km.

**Scarborough and Rouge Hospital - Birchmount Campus**  
 3030 Birchmount Rd  
 6.04 KM

**Fire Station**  
 7801 Bayview Ave  
 1.78 KM

**Police Station**  
 30 Ellerslie Ave  
 6.43 KM

**CONVENIENCE**

This home is located near everyday amenities to make your daily errands easier.

**Coffee**  
 2 KM

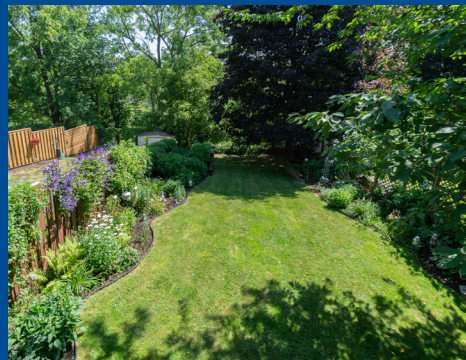
**Gym**  
 0.9 KM

**Grocery**  
 1.6 KM

**Gas Station**  
 1.9 KM



Disclaimer: By accessing this information you have agreed to our terms of service, which are hereby incorporated by reference. This information may contain errors and omissions. You are not permitted to rely on the contents of this information and must take steps to independently verify its contents with the appropriate authorities (school boards, governments etc.). As a recipient of this information, you agree not to hold us, our licensors or the owners of the information liable for any damages, howsoever caused.



**\*\*\*FANTASTIC UPGRADED HOME WITH A YARD THAT FEELS LIKE YOU ARE IN MUSKOKA\*\*\***

This Home Just Needs You To Move In, Totally Updated With New Floors, Kitchen, Appliances, Windows, Roof, Furnace, AC, Crown Moulding, Pot Lights, And So Many More Amazing Features. This End Unit Feels Like A Detached And Has One Of - If Not The Best Lots In The Area. Tons Of Frontage And A Back Yard People Dream Of. Book Your Visit Today To See This Stunning Place.

**Lot Size: 30.42 x 142.10 Feet (As Per Survey) Taxes: \$4,466.71/2018**

Royal LePage Your Community Realty Brokerage does not warrant or guarantee the information in this feature sheet.