

72 Littleside Street

www.72Littleside.com



ROYAL LEPAGE
CHAIRMAN'S CLUB
NATIONAL TOP 1%
2012-2019

Shawn Zigelstein
Broker

TEAM **ZOLD**

Your Home • Your Life • Your Realtors

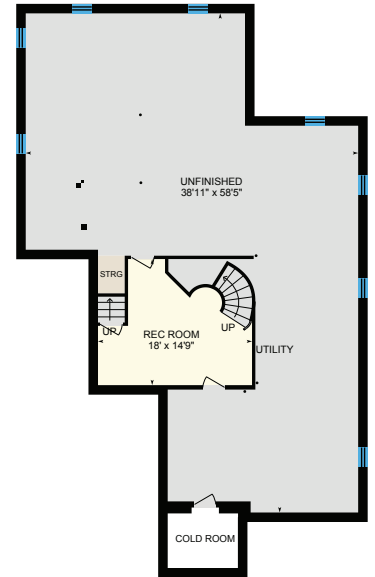
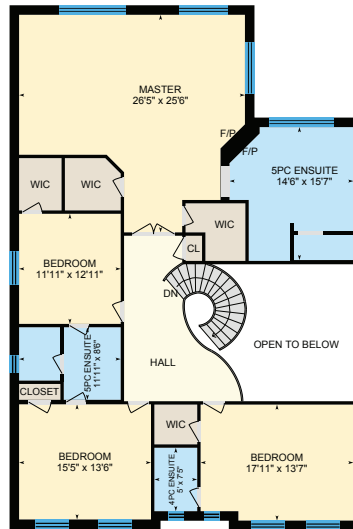
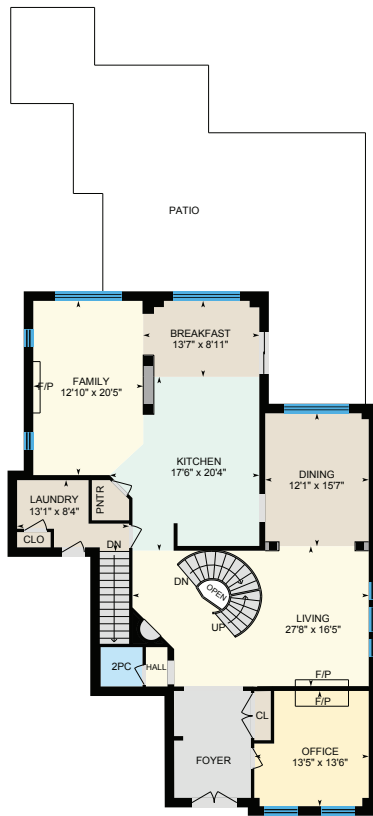
Working For You!

905.731.2000
www.teamzold.com

YOUR
Community
REALTY

ROYAL LEPAGE

BROKERAGE INDEPENDENTLY OWNED & OPERATED





PUBLIC SCHOOLS

Your neighbourhood is part of a community of Public Schools offering Elementary, Middle, and High School programming.

Kettle Lakes PS

Designated Catchment School
Grades PK to 8
62 Kingshill Rd

Windham Ridge PS

Designated Catchment School
Grades 1 to 8
32 Red Cardinal Trail

Académie de la Moraine

Designated Catchment School
Grades PK to 6
115 George St

King City SS

Designated Catchment School
Grades 9 to 12
2001 King Rd

ÉS Norval-Morrisseau

Designated Catchment School
Grades 7 to 12
51 Wright St

ALTERNATIVE & SPECIAL SCHOOLS

Nearby alternative and special education schools include:

Dr. Bette Stephenson Centre for Learning

Grades 9 to 12, Adult
36 Regatta Ave



CATHOLIC SCHOOLS

Your neighbourhood is part of a community of Catholic Schools offering Elementary, Middle, and High School programming.

Father Frederick McGinn Catholic ES

Grades PK to 8 (Assigned)
61 Brockdale St

ÉEC Le-Petit-Prince

Grades PK to 6 (Assigned)
79 Avro Rd

Cardinal Carter Catholic SS

Grades 9 to 12 (Assigned)
210 Old Bloomington Rd

ÉSC Renaissance

Grades 7 to 12 (Assigned)
700 Bloomington Rd

PRIVATE SCHOOLS

The private schools nearest to you are:

Academy for Gifted Children (PACE)

Grades 1 to 12
12 Bond Crescent



Eureka Montessori

Grades PK to 3
13345 Yonge St

PARKS & REC.

This home is located in park heaven, with 4 parks and a long list of recreation facilities within a 20 minute walk from this address.



Mitchell Pond

Estate Garden Dr. and Yonge St
5 min



Timber Valley Trail

Estate Garden Drive
8 min



Groveswood Park

Groveswood St. and Dairy Ave.
11 min



FACILITIES WITHIN A 20 MINUTE WALK

3 Playgrounds
5 Tennis Courts
1 Splash Pad
1 Rink
3 Trails
1 Amphitheatre
2 Sports Fields
5 Basketball Courts
2 Ball Diamonds
1 Arena
3 Picnic Facilities
1 Lawn Bowling/Bocce

TRANSIT

Public transit is at this home's doorstep for easy travel around the city. The nearest street transit stop is only a 6 minute walk away and the nearest rail transit stop is a 63 minute walk away.

Nearest Rail Transit Stop
Gormley GO

Nearest Street Level Transit Stop
Yonge St / Old Colony Rd 6 min

SAFETY

With safety facilities in the area, help is always close by. Facilities near this home include a fire station, a police station, and a hospital within 7.48km.

Mackenzie Richmond Hill Hospital
10 Trench St

Fire Station
13067 Yonge Street

Police Station
100 Bloomington Road

CONVENIENCE

This home is located near everyday amenities to make your daily errands easier.

Coffee **Gym**
 Grocery **Gas Station**



HoodQ

Disclaimer: These materials have been prepared for ycmarketing@yahoo.com and are not intended to solicit buyers or sellers currently under contract with a brokerage. By accessing this information you have agreed to our terms of service, which are hereby incorporated by reference. This information may contain errors and omissions. You are not permitted to rely on the contents of this information and must take steps to independently verify its contents with the appropriate authorities (school boards, governments etc.). As a recipient of this information, you agree not to hold us, our licensors or the owners of the information liable for any damages, however caused.

WOW, IS THE ONLY WAY TO DESCRIBE THIS SPECTACULAR HOME AND PROPERTY

Located On A Quiet Cul-De-Sac, This Home Backs To Protected Conservation Lands With A 268 Foot Deep Lot! Don't Forget About The Home Itself Which Is One Of The Largest In The Area. This Entertainers Dream Has A Gourmet Kitchen With Granite Countertops, Huge Center Island And Walk In Pantry, Open Concept, Crown Mouldings, Custom Extended Trim And Doors, Built In Closets, Organizers, Desks, Shelving, 18 ft Ceilings Living Room Has A Double Sided Gas Fireplace, A Wonderful Office With Built-In Desk And Shelves, Pot Lights, Stone Wall And Gas Fireplace. And Wait Till You See The Master Retreat With Stone Wall and Gas Fireplace, His/Hers Walk In Closets, 5 Pc Ensuite Has A Marble Heated Floors, Soaker Tub and Steam Shower - It Is Unreal! Fully Insulated Basement Is Ready For Drywall And Has A Rough In For The 5th Bath And A Cold Cellar. Backyard Paradise Has Everything You Need For Peaceful Retreat or Entertaining! A Must See For Your Family!

EXTRAS: All Electric Light Fixtures, All Window Coverings, All Existing Gourmet Appliances (Kitchen Aid Stainless Steel 36 Inch Gas Range, Best By Broan Range Hood, Kitchen Aid Stainless Steel Warming Drawer, Kitchen Aid Stainless Steel Fridge, Bosch Stainless Steel Built-In Dishwasher, Panasonic Microwave, Samsung Grey Washer and Dryer, Outdoor Built-In Kitchen With Denby Fridge And Double Napoleon Gas BBQ), Hot Tub, Gas Fire-pit, Playset, Flagstone Walkway And Patio, Fountain (As Is), 200 Amp Electrical Service, Furnace, Electronic Air Cleaner, Humidifier, Air Conditioner, Hot Water Tank (owned), R/I CVAC, Alarm System (not monitored), Tandem 3 Car Garage, Two Garage Door Openers and Remotes.

Lot: 49.25 x 267.88 Feet Taxes: \$8,442.70/2019

Royal LePage Your Community Realty Brokerage does not warrant or guarantee the information in this feature sheet.