

# 70 Bishop Crescent

[www.70Bishop.com](http://www.70Bishop.com)



ROYAL LEPAGE  
**CHAIRMAN'S CLUB**  
NATIONAL TOP 1%  
2012-2019

**Shawn Zigelstein**  
Sales Representative

## TEAM ZOLD

Your Home • Your Life • Your Realtors

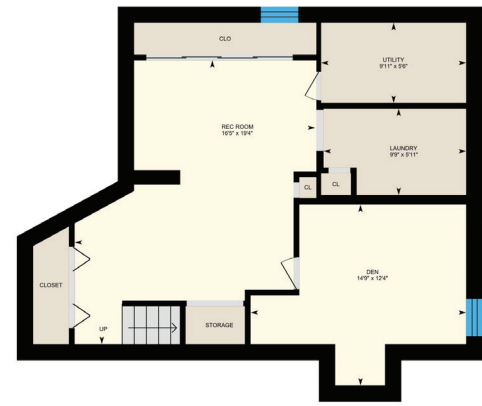
*Working For You!*

905.731.2000  
[www.teamzold.com](http://www.teamzold.com)

Your **Community**<sup>™</sup>  
REALTY

**ROYAL LEPAGE**

BROKERAGE INDEPENDENTLY OWNED & OPERATED





70 Bishop Crescent, Markham, ON L3P 4N7, Canada

### SCHOOLS

With excellent assigned and local public schools very close to this home, your kids will get a great education in the neighbourhood.



#### Edward T. Crowle PS

Designated Catchment School  
Grades PK to 8  
15 Larkin Ave

#### Académie de la Moraine

Designated Catchment School  
Grades PK to 6  
115 George St

#### Markham DHS

Designated Catchment School  
Grades 9 to 12  
89 Church St

#### ÉS Norval-Morrisseau

Designated Catchment School  
Grades 7 to 12  
51 Wright St

#### Other Local Schools

##### Bill Crothers SS

Grades 9 to 12  
44 Main St Unionville

### PARKS & REC.

This home is located in park heaven, with 4 parks and a long list of recreation facilities within a 20 minute walk from this address.



#### Fincham Park

Fincham Ave



5 min

#### Paramount Park

55 Parkway Ave.



6 min

#### Markhaven Park

Parkway Ave



6 min

#### FACILITIES WITHIN A 20 MINUTE WALK

- 1 Pool
- 2 Sports Fields
- 2 Basketball Courts
- 2 Trails
- 1 Lawn Bowling/Bocce
- 3 Playgrounds
- 2 Tennis Courts
- 3 Ball Diamonds
- 1 Multi-Use Pad

### TRANSIT

Public transit is at this home's doorstep for easy travel around the city. The nearest street transit stop is only a 4 minute walk away and the nearest rail transit stop is a 7 minute walk away.

**Nearest Rail Transit Stop**  
Markham GO

7 min

**Nearest Street Level Transit Stop**  
Markham Rd At Springdale St

4 min

### SAFETY

With safety facilities in the area, help is always close by. Facilities near this home include a fire station, a hospital, and a police station within 2.5km.

**Markham Stouffville Hospital**  
381 Church St

**Fire Station**  
209 Main St N

**Police Station**  
8700 McCowan Road

### CONVENIENCE

This home is located near everyday amenities to make your daily errands easier.

**Coffee**

**Gym**

**Grocery**

**Gas Station**

Disclaimer: These materials have been prepared for shawn@earthzold.com and are not intended to solicit buyers or sellers currently under contract with a brokerage. By accessing this information you have agreed to our terms of service, which are hereby incorporated by reference. This information may contain errors and omissions. You are not permitted to rely on the contents of this information and must take steps to independently verify its contents with the appropriate authorities (school boards, governments etc.). As a recipient of this information, you agree not to hold us, our licensors or the owners of the information liable for any damages, howsoever caused.



### \*\*\*WONDERFULLY RENOVATED 3 BEDROOM IN THE HEART OF MARKHAM VILLAGE\*\*\*

If You Have Been Looking To Get Into The Market, Or Downsizing Into An Amazing Home, This Is The One To To Fall In Love With. The Mature Tree Lined Street Welcomes You And Wait Till You See The Renovated Kitchen, Baths, Floors, Staircase, Windows, Roof, Direct Garage Access, Private Yard And More. A Close Walk To Great Parks, Trails, Schools, Shopping, Go Train, And Other Great Amenities.

Extras: All Electric Light Fixtures, All Existing Window Coverings, All Existing Appliances (Samsung Stainless Steel Built-In Microwave, Samsung Stainless Steel Flat Top Stove, Whirlpool Stainless Steel Built-In Dishwasher, Samsung Stainless Steel French Door Fridge, Whirlpool White Washer and Dryer), Insta Hot, Fireplace, Furnace, A/C, CVAC and Attachments, Garage Door Opener and Remote.

Lot Size: 28.58 ft x 121.52 ft Taxes: \$3,613.35/2019

Royal LePage Your Community Realty Brokerage does not warrant or guarantee the information in this feature sheet.