

# 65 Saint Avenue

www.65Saint.com



ROYAL LEPAGE  
**CHAIRMAN'S CLUB**  
NATIONAL TOP 1%  
2012-2017

**Shawn Zigelstein**  
Sales Representative

TEAM **ZOLD**

Your Home • Your Life • Your Realtors

*Working For You!*

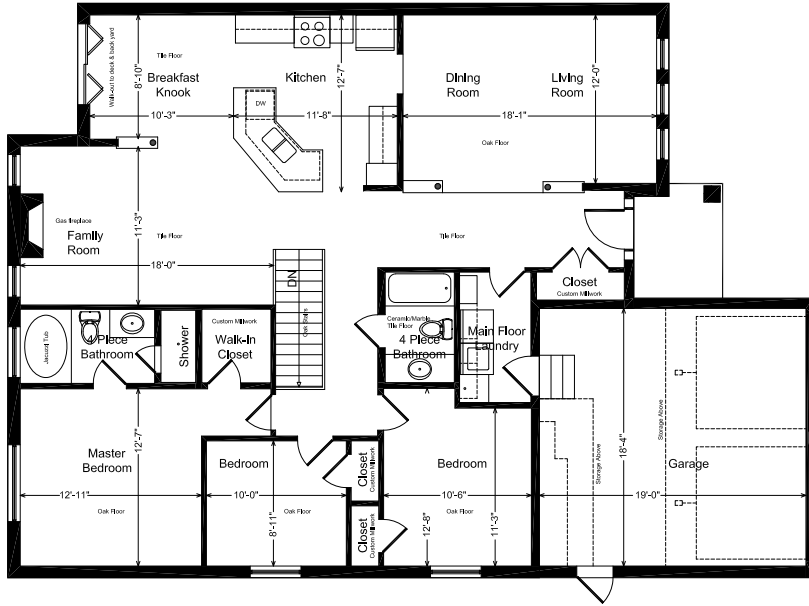
905.731.2000  
www.teamzold.com

Your **Community**<sup>™</sup>  
REALTY

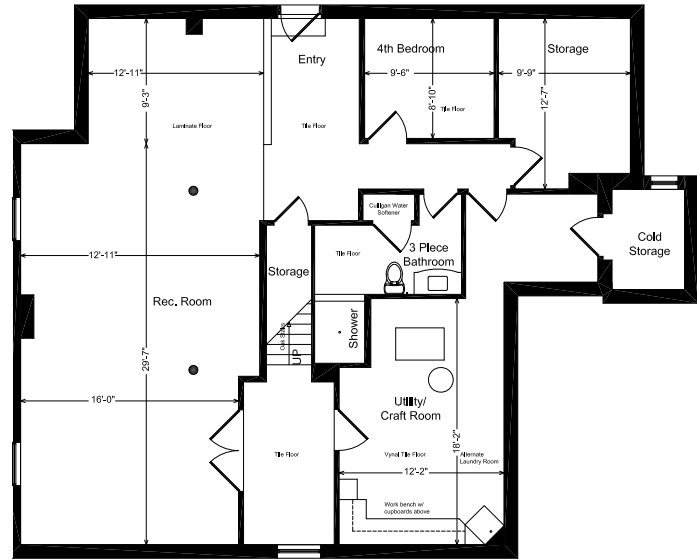


BROKERAGE INDEPENDENTLY OWNED & OPERATED

# FLOOR PLAN



Main Level



Lower Level







**65 St Ave**  
Bradford, ON

INTERACTIVE ADDRESS REPORT

**SCHOOLS**

**Nearby Schools**

With good public schools very close to this home, your kids can thrive in the neighbourhood.



**WH Day ES**

Grades PK to 8  
410 Maplegrove Ave  
1.32 KM

**Bradford DHS**

Grades 9 to 12  
70 Professor Day Dr  
1.52 KM

**Fieldcrest ES**

Grades PK to 8  
100 Professor Day Dr  
1.84 KM

**Fred C Cook PS**

Grades PK to 8  
177 Church St  
2.52 KM

**Chris Hadfield PS**

Grades PK to 8  
177 Church St  
2.52 KM

**Dr John M Denison SS**

Grades 9 to 12  
135 Bristol Rd  
9.06 KM

**PARKS & REC.**

Fun is easy to find at the parks near this home. There are lots of opportunities for sports, relaxation and play in nearby parks and recreation facilities.



1 Park

**Bradford West Gwillimbury Leisure Centre**

471 West Park Ave  
1.38 KM



18 min

**Cardinal Golf Course**

2740 Davis Drive West  
6.18 KM



**FACILITIES WITHIN A 20 MINUTE WALK**

3 Pools                      2 Rinks  
1 Community Centre   1 Track  
1 Fitness/Weight Room   1 Gym

**TRANSIT**

For convenient travel around the city, public transit is accessible from this home.



**Nearest Rail Transit Stop**

Bradford GO Station Rail



**Nearest Street Level Transit Stop**

Barrie St. @ Holland St. W.

**SAFETY**

With safety facilities in the area, help is always close by. Facilities near this home include a police station, a fire station, and a hospital within 11.16km.



**Southlake Regional Health Centre**

596 Davis Dr  
11.16 KM



**Fire Station**

75 Melbourne Drive  
1.23 KM



**Police Station**

81 Melbourne Drive  
1.16 KM

**CONVENIENCE**

This home is located near everyday amenities to make your daily errands easier.



**Coffee**

1.2 KM



**Gym**

1.4 KM



**Grocery**

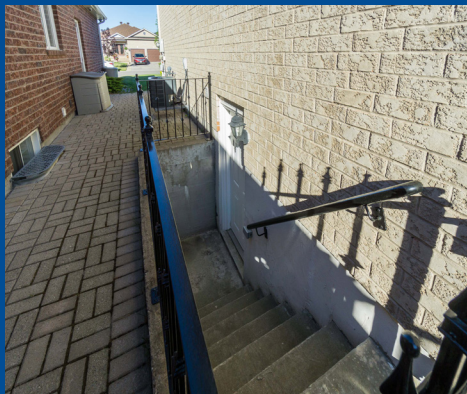
1.3 KM



**Gas Station**

3 KM

Disclaimer: By accessing this information you have agreed to our terms of service, which are hereby incorporated by reference. This information may contain errors and omissions. You are not permitted to rely on the contents of this information and must take steps to independently verify its contents with the appropriate authorities (school boards, governments etc.) As a recipient of this information, you agree not to hold us, our licensors or the owners of the information liable for any damages, howsoever caused.



\*\*\*WELCOME HOME TO THIS FANTASTIC BUNGALOW ON A GREAT QUIET STREET\*\*\*

Nothing Needed Except For You To Pack Your Bags. This Home Shows 10++ And Is Ready For You To Move In And Enjoy. Gourmet Kitchen With Granite Counters And Stainless Steel Appliances, 9 Foot Ceilings, Open Concept Layout, Professionally Finished Basement With Separate Entrance, Landscaped Yard With In Ground Sprinklers And So Much More. Close To Fantastic Amenities, Hwy 400, And Public Transit.

Includes: Fridge, Stove, Dish Washer, Washer, Dryer, Gas Fireplace, Water Softner, Air Conditioning, Central Vacuum, 2 Garage Door Openers, Jacuzzi Tub, New Roof Eaves and Downspouts in 2017, Alarm, Inground Sprinklers, Electrical light fixtures, Window Coverings, Closet Organizers, So Much More!

Lot Size: 49.21 Feet x 114.63 Feet    Taxes: \$5083.39/2018

Royal LePage Your Community Realty Brokerage does not warrant or guarantee the information in this feature sheet.