

# 65 Gamla Road

[www.65Gamla.com](http://www.65Gamla.com)



ROYAL LEPAGE  
**CHAIRMAN'S CLUB**  
NATIONAL TOP 1%  
2012-2019

**Shawn Zigelstein**  
Sales Representative

TEAM **ZOLD**

Your Home • Your Life • Your Realtors

*Working For You!*

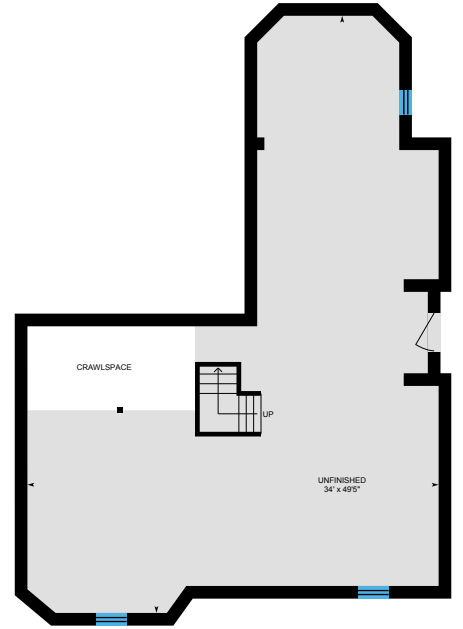
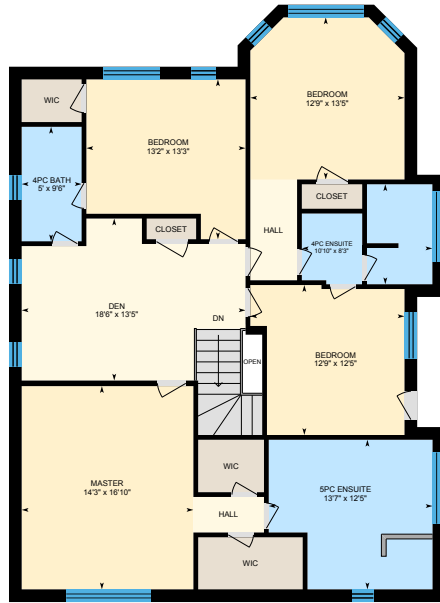
905.731.2000  
[www.teamzold.com](http://www.teamzold.com)

Your **Community**<sup>™</sup>  
REALTY

**ROYAL LEPAGE**

BROKERAGE INDEPENDENTLY OWNED & OPERATED

# 65 Gamla Rd, Vaughan, ON





## PUBLIC SCHOOLS

Your neighbourhood is part of a community of Public Schools offering Elementary, Middle, and High School programming.

### Anne Frank PS

Designated Catchment School  
Grades PK to 8  
431 Ilan Ramon Blvd

### Académie de la Moraine

Designated Catchment School  
Grades PK to 6  
115 George St

### ÉS Norval-Morriseau

Designated Catchment School  
Grades 7 to 12  
51 Wright St

### Roméo Dallaire PS

Designated Catchment School  
Grades 2 to 8  
550 Peter Rupert Ave

### Alexander MacKenzie HS

Designated Catchment School  
Grades 9 to 12  
300 Major MacKenzie Dr W



## ALTERNATIVE & SPECIAL SCHOOLS

Nearby alternative and special education schools include:

### YRDSB Continuing Education

Grades 9 to 12  
11160 Yonge St

## CATHOLIC SCHOOLS

Your neighbourhood is part of a community of Catholic Schools offering Elementary, Middle, and High School programming.

### St Anne Catholic ES

Grades PK to 8 (Assigned)  
105 Don Head Village Blvd

### ÉEC Le-Petit-Prince

Grades PK to 6 (Assigned)  
79 Avro Rd

### St Theresa of Lisieux Catholic HS

Grades 9 to 12 (Assigned)  
230 Shaftsbury Ave

### ÉSC Renaissance

Grades 7 to 12 (Assigned)  
700 Bloomington Rd

## PRIVATE SCHOOLS

The private schools nearest to you are:



### Highland Academy of Canada

Grades 9 to 12  
9600 Bathurst St

### The Leo Baeck Day School

Grades PK to 8  
9600 Bathurst Street

### TanenbaumCHAT

Grades 9 to 12  
9600 Bathurst St

### Toronto Waldorf School

Grades PK to 12  
9100 Bathurst St

## PARKS & REC.

This home is located in park heaven, with 4 parks and a long list of recreation facilities within a 20 minute walk from this address.



### Mill Race Park

310 Thomas Cook Ave



6 min

### Tannery Park

209 Castle Rock Dr



8 min

### Pioneer Park

105 Valley Vista Dr



8 min

### FACILITIES WITHIN A 20 MINUTE WALK

4 Playgrounds 1 Sports Field  
4 Tennis Courts 2 Basketball Courts  
1 Multi-Use Pad

## TRANSIT

Public transit is at this home's doorstep for easy travel around the city. The nearest street transit stop is only a 2 minute walk away and the nearest rail transit stop is a 44 minute walk away.

**Nearest Rail Transit Stop**  
Rutherford GO

**Nearest Street Level Transit Stop**

Ilan Ramon Av / Timna Cres

2 min

## SAFETY

With safety facilities in the area, help is always close by. Facilities near this home include a hospital, a fire station, and a police station within 2.38km.

**Mackenzie Richmond Hill Hospital**  
10 Trench St

**Fire Station**  
191 Major Mackenzie Drive West

**Police Station**  
171 Major Mackenzie Drive West

## CONVENIENCE

This home is located near everyday amenities to make your daily errands easier.

**Coffee** **Gym**  
 **Grocery** **Gas Station**



### \*\*\*RENOVATED VALLEYS OF THORNHILL HOME ON AN OVER-SIZED CORNER LOT\*\*\*

The Warmth You Will Feel When You Enter This Home Is Amazing. So Many Great Features To Name That It Is Impossible To Know Where To Even Start. Freshly Painted Home With Brand New Carpet on 2nd Floor (2020). The Layout Is An Entertainers Dream - The House Is So Bright With Large Windows Everywhere Which Allows In A Ton Of Natural Light. Easily Convertible To 5 Bedrooms. Close To Schools, Parks, Transit And More.

**EXTRAS:** All Electric Light Fixtures, All Existing Window Coverings and Rods, Existing Appliances (Samsung Stainless Steel Fridge, Bosch Stainless Steel Built-In Dishwasher, New Venmar Stainless Steel Hood Fan, Whirlpool Duet Grey Washer and Dryer, Stove in the Basement), Quartz Countertops, Kitchen Backsplash, Built-In Shelving, TVs and Brackets, Gas Fireplace, Furnace, Humidifier, A/C, BBQ, Backyard Shed, Two Garage Door Openers and Remotes.

**EXCLUSIONS:** Kitchen Stove, Fridge and Freezer in the Basement. **RENTAL ITEMS:** Hot Water Tank.

Lot Size: 51.97 ft x 70.86 ft Taxes: \$6,945.81/ 2019

Royal LePage Your Community Realty Brokerage does not warrant or guarantee the information in this feature sheet.