

# 55 Red Cardinal Trail

[www.55RedCardinal.com](http://www.55RedCardinal.com)



ROYAL LEPAGE  
**CHAIRMAN'S CLUB**  
NATIONAL TOP 1%  
2012-2018

TEAM **ZOLD**

Your Home • Your Life • Your Realtors

*Working For You!*

**Shawn Zigelstein**  
Sales Representative

905.731.2000  
[www.teamzold.com](http://www.teamzold.com)

Your **Community**<sup>™</sup>  
REALTY

**ROYAL LEPAGE**

BROKERAGE INDEPENDENTLY OWNED & OPERATED

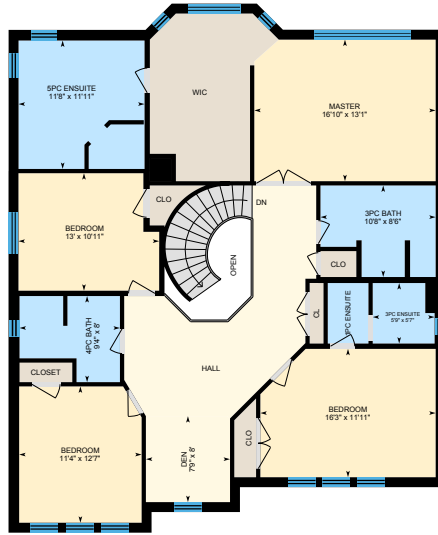


# 55 Red Cardinal Trail, Richmond Hill, ON

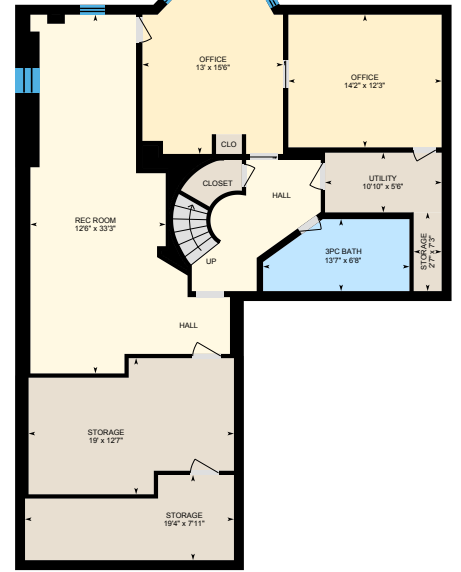
Main Building: Total Exterior Area Above Grade 3317 sq ft



**Main Floor**  
Exterior Area 1547 sq ft



**2nd Floor**  
Exterior Area 1770 sq ft



**Basement (Below Grade)**  
Exterior Area 1628 sq ft









# 55 Red Cardinal Trail, Richmond Hill, ON L4E 3Y4, Canada

## SCHOOLS

With excellent assigned and local public schools very close to this home, your kids will get a great education in the neighbourhood.



### Windham Ridge PS

Designated Catchment School  
Grades 1 to 8  
32 Red Cardinal Trail  
0.19 KM

### Oak Ridges PS

Designated Catchment School  
Grades PK to 8  
160 Coons Rd  
0.48 KM

### Académie de la Moraine

Designated Catchment School  
Grades PK to 6  
115 George St  
4.45 KM

### King City SS

Designated Catchment School  
Grades 9 to 12  
2001 King Rd  
4.49 KM

### ÉS Norval-Morrisseau

Designated Catchment School  
Grades 9 to 12  
51 Wright St  
8.91 KM

## PARKS & REC.

This home is located in park heaven, with 4 parks and 8 recreation facilities within a 20 minute walk from this address.



### Oak Ridges Lions Club Park

Red Cardinal Trail  
0.1 KM



1 min

### Cardinal Woods Park

32 Red Cardinal Trail  
0.27 KM



4 min

### Coons Parkette

117 Fern Valley Crescent  
0.24 KM



3 min

### FACILITIES WITHIN A 20 MINUTE WALK

2 Playgrounds      1 Tennis Court  
1 Basketball Court      1 Splash Pad  
3 Trails

## TRANSIT

Public transit is at this home's doorstep for easy travel around the city. The nearest street transit stop is only a 6 minute walk away and the nearest rail transit stop is a 70 minute walk away.

### Nearest Rail Transit Stop

Aurora GO  
5.27 KM

### Nearest Street Level Transit Stop

Bloomfield Trail / Fern Valley Cre  
0.42 KM

6 min

## SAFETY

With safety facilities in the area, help is always close by. Facilities near this home include a police station, a fire station, and a hospital within 9.57km.

### Mackenzie Richmond Hill Hospital

10 Trench St  
9.57 KM

### Fire Station

13067 Yonge Street  
1.68 KM

### Police Station

100 Bloomington Road  
1.57 KM

## CONVENIENCE

This home is located near everyday amenities to make your daily errands easier.

### Coffee

1 KM

### Grocery

1.4 KM

### Gym

1.3 KM

### Gas Station

1 KM

Disclaimer: These materials have been prepared for dshawn@realml.com and are not intended to solicit buyers or sellers currently under contract with a brokerage. By accessing this information you have agreed to our terms of service, which are hereby incorporated by reference. This information may contain errors and omissions. You are not permitted to rely on the contents of this information and must take steps to independently verify its contents with the appropriate authorities (school boards, governments etc.). As a recipient of this information, you agree not to hold us, our licensors or the owners of the information liable for any damages, however caused.



## \*\*\*WELCOME HOME TO THE ESTATES OF THE HUMBERLANDS\*\*\*

This Wonderful Home Has Everything Done For You - Gourmet Kitchen, Hardwood Floors, Pot Lights, Custom Millwork, Completely Finished Basement, Extensive Landscaping And Stone Work, Inground Pool With Gazebo, And So Much More. Located In A Fantastic Family Friendly Neighborhood and Is Close To Parks, Schools, Trails And Other Great Amenities!

Extras: Includes: Electrical Light Fixtures, Potlights, Crown Mouldings, Window Coverings, Stainless Steel Gourmet Appliances (French Door Fridge, Dishwasher, Hood Fan, Wolfe 6 Burner Range) Samsung Washer & Dryer, 2 Garage Door Openers, B/I Storage Shelves, Shed & Poolhouse w/ 2 Piece Bath and More!

Lot Size: 41 x 125 Feet (Pie Shaped) | Taxes: \$6,124.81 / 2018

Royal LePage Your Community Realty Brokerage does not warrant or guarantee the information in this feature sheet.