

# 55 Oneida Crescent #201

[www.55Oneida.ca](http://www.55Oneida.ca)



ROYAL LEPAGE  
**CHAIRMAN'S CLUB**  
NATIONAL TOP 1%  
2012-2017

**Shawn Zigelstein**  
Sales Representative

## TEAM ZOLD

Your Home • Your Life • Your Realtors

*Working For You!*

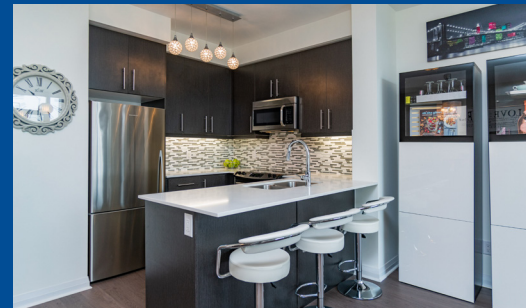
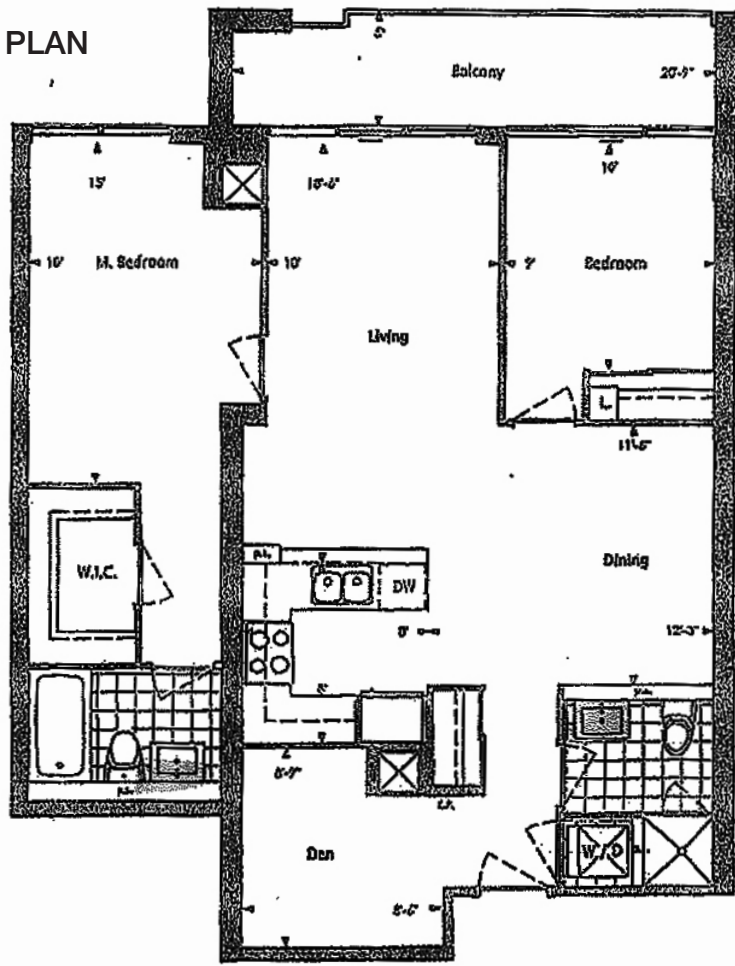
905.731.2000  
[www.teamzold.com](http://www.teamzold.com)

Your **Community**<sup>™</sup>  
REALTY



BROKERAGE INDEPENDENTLY OWNED & OPERATED

# FLOOR PLAN



## \*\*\*\*SPECTACULAR OPEN CONCEPT CONDO\*\*\*

Located In The Prestigious Sky City By Pemberton, This Amazing Condo Has To Be Seen To Be Truly Appreciated. A Fantastic Layout With Designer Touches, This Condo Is Ready For You To Move In. Stunning Wide Plank Floors, Decor Out Of A Magazine, And A Great Modern Feel Make It All Come Together In Perfect Harmony. Tons Of Extras And In A Complex That Is Second To None. Indoor Pool, Gym, Party Room, And So Many More Amenities.

Maintenance Fees: \$865.51/Month Taxes: \$3,182.61/2018

Royal LePage Your Community Realty Brokerage does not warrant or guarantee the information in this feature sheet.