

WELCOME TO

545 Elm Road

www.545elm.com



ROYAL LEPAGE
CHAIRMAN'S CLUB
NATIONAL TOP 1%
2012-2018

Shawn Zigelstein
Sales Representative

TEAM **ZOLD**

Your Home • Your Life • Your Realtors

Working For You!

905.731.2000
www.teamzold.com

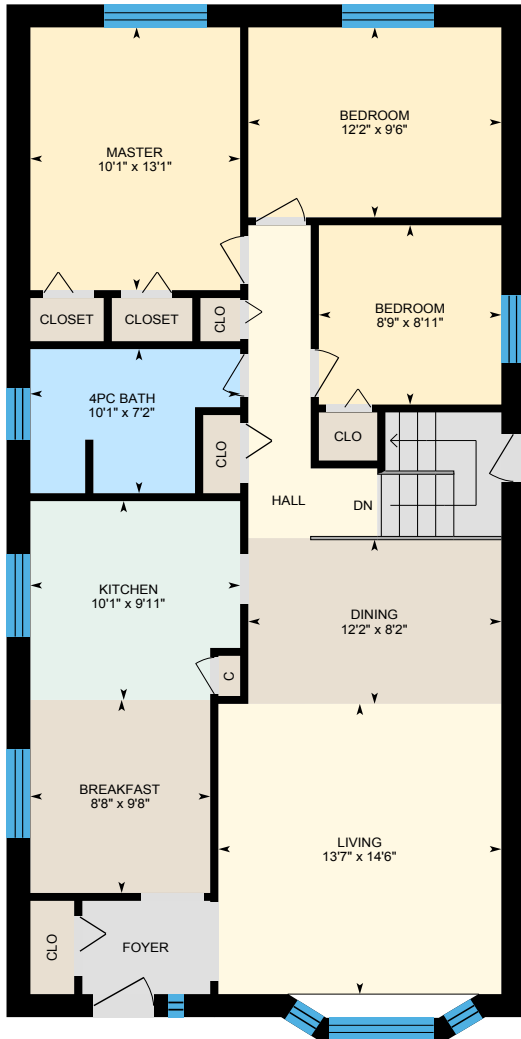
Your **Community**[™]
REALTY



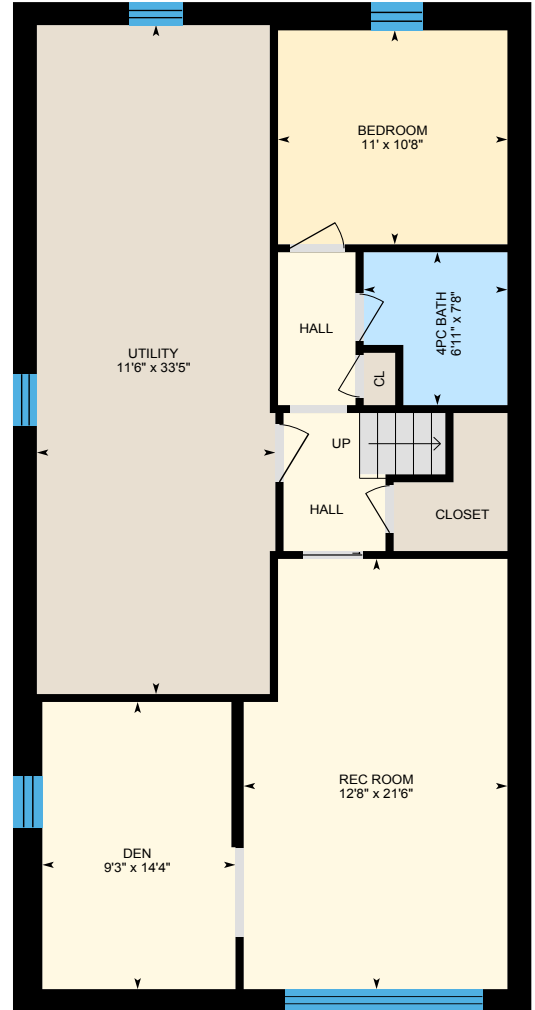
BROKERAGE INDEPENDENTLY OWNED & OPERATED

545 Elm Rd, Whitchurch-Stouffville, ON

Main Building: Total Exterior Area Above Grade 1261 sq ft



Main Floor
Exterior Area 1261 sq ft



Basement (Below Grade)
Exterior Area 1249 sq ft





545 Elm Rd, Whitchurch-Stouffville, ON L4A 1W8, Canada

SCHOOLS

With good assigned and local public schools very close to this home, your kids can thrive in the neighbourhood.



Glad Park PS

Designated Catchment School
Grades PK to 8
300 Glad Park Ave

Académie de la Moraine

Designated Catchment School
Grades PK to 6
115 George St

Stouffville District SS

Designated Catchment School
Grades 9 to 12
801 Hoover Park Dr

ÉS Norval-Morrisseau

Designated Catchment School
Grades 7 to 12
51 Wright St

PARKS & REC.

This home is located in park heaven, with 3 parks and a long list of recreation facilities within a 20 minute walk from this address.



Stouffville Arena



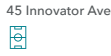
12483 Ninth Line
12 min

Spring Lakes Golf Club



4962 Stouffville Road
16 min

SoccerCity



45 Innovator Ave
14 min

FACILITIES WITHIN A 20 MINUTE WALK

- 5 Sports Fields
- 2 Rinks
- 1 Golf Course
- 2 Indoor Dry Pads
- 4 Tennis Courts
- 1 Arena
- 1 Track
- 1 Country Club

TRANSIT

Public transit is at this home's doorstep for easy travel around the city. The nearest street transit stop is only a 3 minute walk away and the nearest rail transit stop is a 17 minute walk away.

Nearest Rail Transit Stop
Stouffville GO
17 min

Nearest Street Level Transit Stop
Millard St / Winlane Dr
3 min

SAFETY

With safety facilities in the area, help is always close by. Facilities near this home include a fire station, a police station, and a hospital within 9.99km.

Markham Stouffville Hospital
381 Church St

Fire Station
100 Weldon Rd

Police Station
111 Sandiford Drive

CONVENIENCE

This home is located near everyday amenities to make your daily errands easier.

- Coffee
- Gym
- Grocery
- Gas Station

Disclaimer: These materials have been prepared for shawn@hearnzold.com and are not intended to solicit buyers or sellers currently under contract with a brokerage. By accessing this information you have agreed to our terms of service, which are hereby incorporated by reference. This information may contain errors and omissions. You are not permitted to rely on the contents of this information and must take steps to independently verify its contents with the appropriate authorities (school boards, governments etc.). As a recipient of this information, you agree not to hold us, our licensors or the owners of the information liable for any damages, howsoever caused.



***** FANTASTIC RENOVATED BUNGALOW READY TO MOVE IN AND ENJOY*****

This Wonderful Home Is Just Off Main Street Stouffville, And Has Some Amazing Features For You And Your Family To Enjoy.

So Many Extra's Already Done - Roof, Windows, Doors, Furnace, AC, Floors, Professionally Finished Basement

With Side Door Separate Entrance, Stunning Landscaping, Private Yard And So Much More!

A Quick Walk To Great Schools, New Shopping Plaza, Go Train Station, Parks, And Other Terrific Amenities.

Includes: All Existing Appliances (GE Stainless Steel Fridge, GE Stainless Steel Stove, GE Black Built In Dishwasher, Kitchen Aid Built In Microwave, GE White Washer, Whirlpool White Dryer), Water Softener, AC, Furnace, Humidifier, Garage Door Opener and More!!

Lot Size: 50 x 100 Feet | Taxes: \$3,801.84 / 2018

Royal LePage Your Community Realty Brokerage does not warrant or guarantee the information in this feature sheet.