

# 51 Oak Ridge Court

[www.51oakridge.com](http://www.51oakridge.com)



Your Community  
REALTY  
**ROYAL LEPAGE**  
BROKERAGE INDEPENDENTLY OWNED & OPERATED

**Marek Kloda**  
Sales Representative

TEAM **ZOLD**

Your Home • Your Life • Your Realtors

*Working For You!*

905.731.2000  
[www.teamzold.com](http://www.teamzold.com)

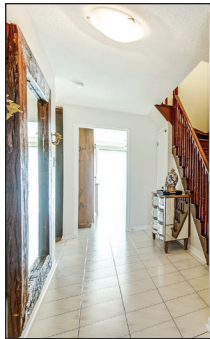
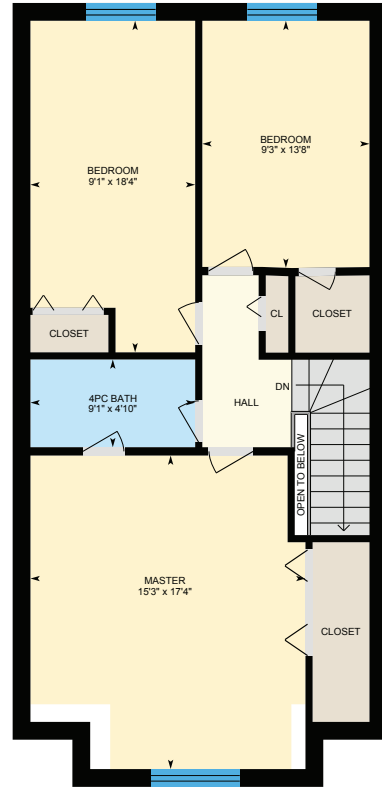
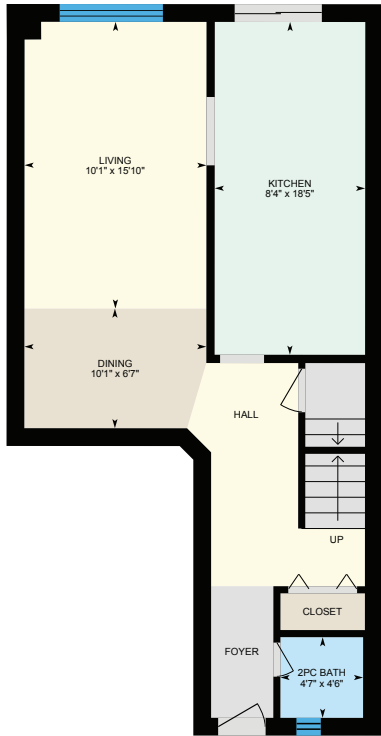


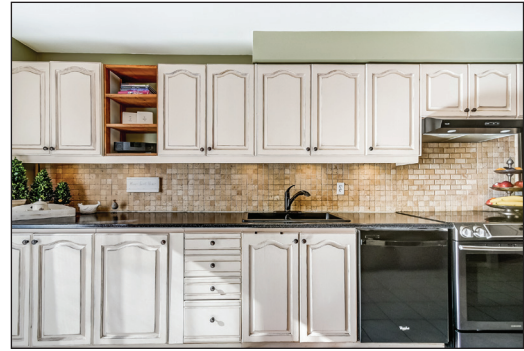
ROYAL LEPAGE  
**CHAIRMAN'S CLUB**  
NATIONAL TOP 1%  
2012-2019

**Shawn Zigelstein**  
Sales Representative



51 Oak Ridge Ct, East Gwillimbury, ON





## PUBLIC SCHOOLS

Your neighbourhood is part of a community of Public Schools offering Elementary, Middle, and High School programming.

### Holland Landing PS

Designated Catchment School  
Grades PK to 8  
16 Holland River Blvd

### Académie de la Moraine

Designated Catchment School  
Grades PK to 6  
115 George St

### Poplar Bank PS

Designated Catchment School  
Grades PK to 8  
400 Woodspring Ave

### És Norval-Morrisseau

Designated Catchment School  
Grades 7 to 12  
51 Wright St

## ALTERNATIVE & SPECIAL SCHOOLS

Nearby alternative and special education schools include:

### Above and Beyond Learning Experience

Grades 1 to 12  
1220 Stellar Dr

### Above and Beyond Learning Experience

Grades 1 to 12  
1220 Stellar Dr

## CATHOLIC SCHOOLS

Your neighbourhood is part of a community of Catholic Schools offering Elementary, Middle, and High School programming.

### Good Shepherd Catholic ES

Grades PK to 8 (Assigned)  
19112 2nd Concession Road

### ÉEC Jean-Béliveau

Grades PK to 6 (Assigned)  
19300 2nd Concession Rd

### Sacred Heart Catholic HS

Grades 9 to 12 (Assigned)  
908 Lemar Rd

### ÉSC Renaissance

Grades 7 to 12 (Assigned)  
700 Bloomington Rd

## PRIVATE SCHOOLS

The private schools nearest to you are:



### King Christian School

Grades K to 8  
19740 Bathurst St

### La Maison Montessori House

Grades PK to 8  
1205 Stellar Dr

### Newmarket & District Christian Academy

Grades K to 8  
221 Carlson Dr

### Pickering College

Grades PK to 12  
16945 Bayview Ave

## PARKS & REC.

This home is located in park heaven, with 4 parks and a long list of recreation facilities within a 20 minute walk from this address.



### Emily Park

84 Oakridge Ct



2 min

### Stonehill Park

509 Newmarket St



9 min

### Holland Landing Community Centre

20 McQuaid Ct



6 min

### FACILITIES WITHIN A 20 MINUTE WALK

4 Playgrounds 1 Sports Field  
3 Tennis Courts 1 Basketball Court  
1 Splash Pad 1 Ball Diamond  
1 Community Centre 1 Picnic Facilities

## TRANSIT

Public transit is at this home's doorstep for easy travel around the city. The nearest street transit stop is only a minute walk away and the nearest rail transit stop is a 49 minute walk away.



### Nearest Rail Transit Stop

East Gwillimbury GO



### Nearest Street Level Transit Stop

Yonge St. @ Mortonvale Dr.



1 min

## SAFETY

With safety facilities in the area, help is always close by. Facilities near this home include a fire station, a hospital, and a police station within 6.11km.



### Southlake Regional Health Centre

596 Davis Dr



### Fire Station

19134 Yonge St



### Police Station

240 Prospect Street

## CONVENIENCE

This home is located near everyday amenities to make your daily errands easier.



### Coffee



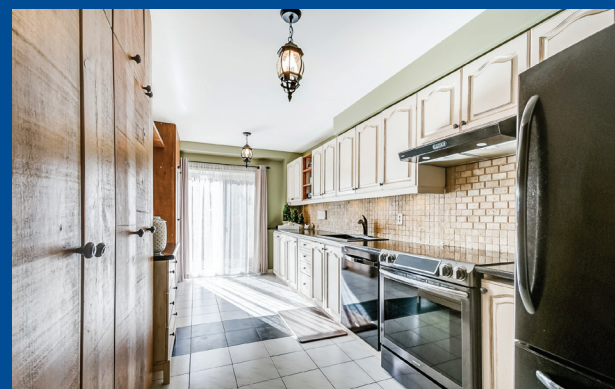
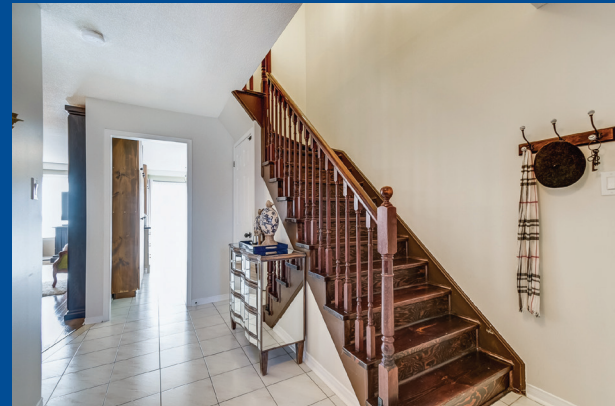
### Gym



### Grocery



### Gas Station



## HoodQ

Disclaimer: These materials have been prepared for your marketing purposes and are not intended to solicit buyers or sellers currently under contract with a brokerage. By accessing this information you have agreed to our terms of service, which are hereby incorporated by reference. This information may contain errors and omissions. You are not permitted to rely on the contents of this information and must take steps to independently verify its contents with the appropriate authorities (school boards, governments etc.). As a recipient of this information, you agree not to hold us, our licensors or the owners of the information liable for any damages, however caused.



\*\*\*FANTASTIC OPPORTUNITY!!! BEAUTIFUL 3 BDRM FREEHOLD TOWNHOUSE WITH WALK OUT BASEMENT\*\*\*

Very Private, Deep Backyard with Deck with Sunny Views!!! Updated Kitchen Cabinets with Extra Pantry. New Hardwood and Many Upgrades!!! Oversized Master Bedroom. Ideally Located Within Walking Distance to Community Centre, Library, Transit, Retail And Post Office And A Short Drive To Go Train Station in Newmarket!!!

EXTRAS: All Electric Light Fixtures, Stainless Steel French Door Fridge, Flat Top Convection Samsung Stove, Built In Dishwasher, Washer/Dryer, Gas Furnace, Central Air Conditioner, Water Softener, Rough in Central Vac. Rental: HWT.

Exclusions: All mirrors Except Bathrooms, 3 Drawer Cabinet In The Kitchen, TV Bracket In Master Bedroom.

Lot Size: 19.73 ft x 128.72 ft Taxes: \$3,058.16/2020