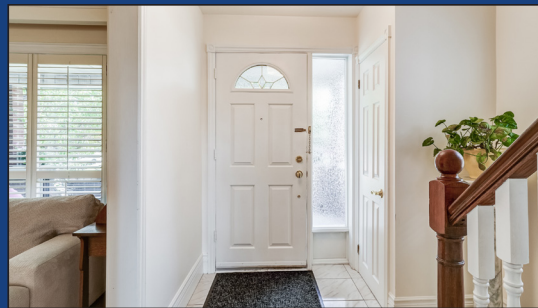
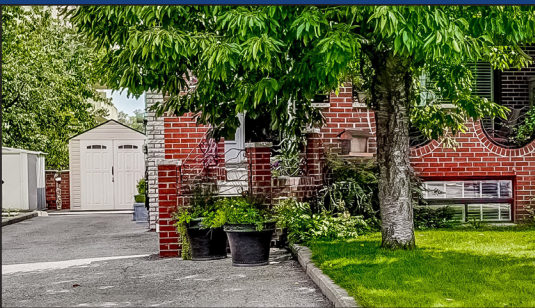


WELCOME TO

31 Donofree Road

www.31Donofree.com



**Shawn
Zigelstein**
Broker

TEAM **ZOLD**

Your Home • Your Life • Your Realtors

Working For You!

905.731.2000

www.teamzold.com



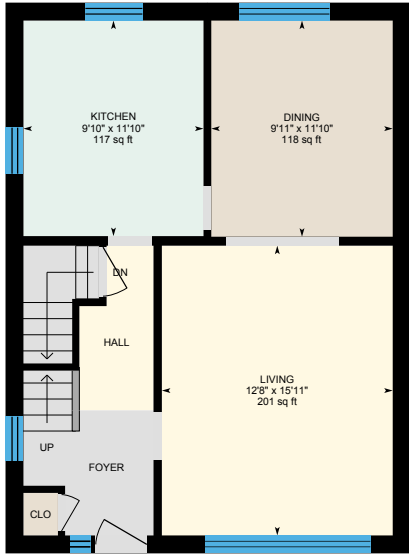
ROYAL LEPAGE
CHAIRMAN'S CLUB
NATIONAL TOP 1%
LIFETIME MEMBER

Your **Community**
REALTY™

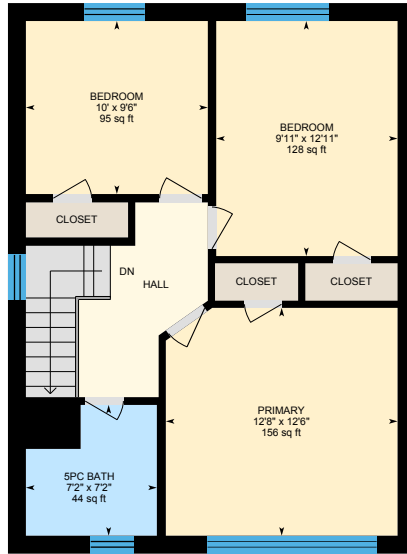
ROYAL LEPAGE

BROKERAGE INDEPENDENTLY OWNED & OPERATED

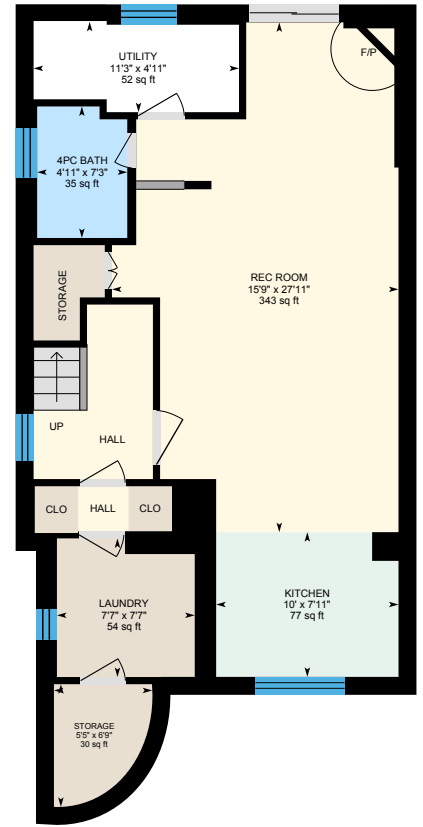
31 Donofree Road, North York



Main Floor



2nd Floor



Basement (Below Grade)





PUBLIC SCHOOLS

Your neighbourhood is part of a community of Public Schools offering Elementary, Middle, and High School programming.

ÉE Mathieu-da-Costa

Designated Catchment School
Grades PK to 6
116 Cornelius Pkwy

ÉS Étienne-Brulé

Designated Catchment School
Grades 7 to 12
300 Banbury Rd

Maple Leaf Public School

Designated Catchment School
Grades PK to 8
301 Culford Rd

Weston Collegiate Institute

Designated Catchment School
Grades 9 to 12
100 Pine St

ALTERNATIVE & SPECIAL SCHOOLS

Nearby alternative and special education schools include:

Yorkdale Secondary School (EdVance)

Grades 12
38 Orfus Rd

Yorkdale Adult Learning Centre

Grades 12, Adult
38 Orfus Rd



CATHOLIC SCHOOLS

Your neighbourhood is part of a community of Catholic Schools offering Elementary, Middle, and High School programming.

St. Fidelis Catholic School

Grades PK to 8
9 Bannerman St

ÉÉC Saint-Noël-Chabanel-Toronto

Grades PK to 6
30 Thistle Down Boulevard

ÉSC Monseigneur-de-Charbonnel

Grades 7 to 12
110 Drewry Ave

Chaminade College School

Grades 9 to 12
490 Queens Dr

PRIVATE SCHOOLS

The private schools nearest to you are:



Sterling Hall School

Grades K to 8
99 Cartwright Avenue

Leonardo Da Vinci Academy

Grades PK to 8
901 Lawrence Ave W

Fieldstone Day School

Grades PK to 8
2999 Dufferin Street

Fieldstone King's College School

Grades 9 to 12
2999 Dufferin Street



PARKS & REC.

This home is located in park heaven, with 4 parks and a long list of recreation facilities within a 20 minute walk from this address.



Queen's Greenbelt

600 Queen's Dr
1 min



Amesbury Park

1507 Lawrence Ave W
9 mins



North Park

587 Rustic Rd
2 mins



FACILITIES WITHIN A 20 MINUTE WALK

- 3 Playgrounds
- 1 Rink
- 4 Tennis Courts
- 1 Basketball Court
- 3 Ball Diamonds
- 1 Sports Field
- 1 Community Centre
- 1 Splash Pad
- 7 Outdoor Games Facilities
- 2 Trails
- 1 Fitness/Weight Room
- 1 Gym



TRANSIT

Public transit is at this home's doorstep for easy travel around the city. The nearest street transit stop is only a 2 minute walk away and the nearest rail transit stop is a 38 minute walk away.

Nearest Rail Transit Stop
Yorkdale Station

Nearest Street Level Transit Stop
Keele St At Maple Leaf Dr



2 mins

SAFETY

With safety facilities in the area, help is always close by. Facilities near this home include a fire station, a police station, and a hospital within 1.35km.

Humber River Hospital
1235 Wilson Ave

Fire Station
1505 Lawrence Ave W

Police Station
2682 Keele St



Disclaimer: These materials have been prepared for shawn@teamzold.com and are not intended to solicit buyers or sellers currently under contract with a brokerage. By accessing this information you have agreed to our terms of service, which are hereby incorporated by reference. This information may contain errors and omissions. You are not permitted to rely on the contents of this information and must take steps to independently verify its contents with the appropriate authorities (school boards, governments etc.). As a recipient of this information, you agree not to hold us, our licensors or the owners of the information liable for any damages, howsoever caused.

AMAZING SEMI-DETACHED HOME ON A PRIVATE TREED LOT ON A GREAT DEAD END STREET

If You Are Looking For A Quiet Street With Ravine Access And A Great Home All At Once? You've Found It Here At 31 Donofree Road. This Well Maintained 2 Storey Home Has So Many Amazing Features That You Will Fall In Love With As Soon As You Drive Up. The Curb Appeal Is Unparalleled And There Is An Extra Outdoor Living Space On The Covered Front Porch. Parking For 6 Cars With The Private Driveway, And Then You Head Inside. The Formal Living And Dining Room Feature Hardwood Floors And Crown Mouldings And Can Be Opened Up If You Choose To Make It A Project. The Basement Features A Complete Walkout Along With A Side Separate Entrance, Full Kitchen, Bathroom And Great Living Space. The Private Back Yard Has A Great Garden, Along With Patio Space And Even A Hidden Full Shed Under The Driveway. TTC Right Around The Corner, Schools Close By, And Several Stores And Restaurants A Just Quick Walk Away.

Extras: All Existing Appliances: Whirlpool White Fridge, Whirlpool White Stove, White Built-In Hoodfan; Basement Appliances: Kenmore White Fridge, Whirlpool White Built-In Dishwasher, Kenmore White Stove, Built-In Hoodfan, GE White Side-By-Side Door Fridge; Maytag Blue Washer and Dryer, Gas Fireplace, All Window Coverings, All Electrical Light Fixtures, Furnace, A/C, Humidifier, CVAC (no attachments).

Rental: Hot Water Tank

Lot: 35.17 ft x 113.37 ft. | Taxes: \$3,451.30/ 2023

Royal LePage Your Community Realty Brokerage does not warrant or guarantee the information in this feature sheet.