

219 Ray Snow Blvd.

www.219RaySnow.com



Shawn Zigelstein
Sales Representative



ROYAL LEPAGE
CHAIRMAN'S CLUB
NATIONAL TOP 1%
2012-2018

TEAM ZOLD

Your Home • Your Life • Your Realtors

Working For You!

905.731.2000
www.teamzold.com

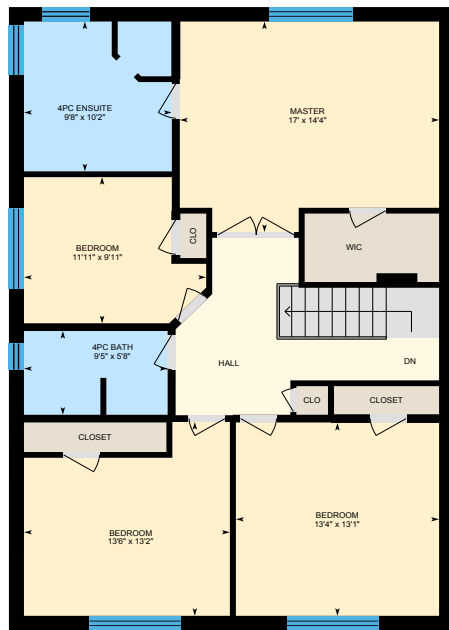
Your **Community**[™]
REALTY

ROYAL LEPAGE

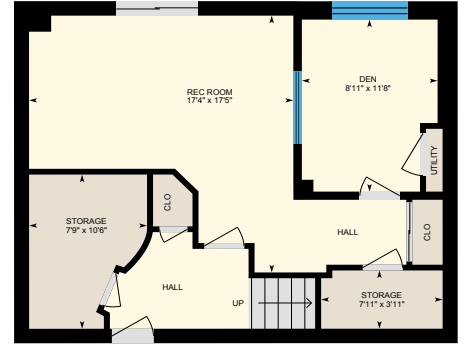
BROKERAGE INDEPENDENTLY OWNED & OPERATED



1st Floor



2nd Floor



Basement





219 Ray Snow Blvd, Newmarket, ON L3X 3J1, Canada

SCHOOLS

With good assigned and local public schools near this home, your kids can thrive in the neighbourhood.



Alexander Muir PS

Designated Catchment School
Grades PK to 8
75 Ford Wilson Blvd

Académie de la Moraine

Designated Catchment School
Grades PK to 6
115 George St

ÉS Norval-Morrisseau

Designated Catchment School
Grades 7 to 12
51 Wright St

Poplar Bank PS

Designated Catchment School
Grades PK to 8
400 Woodspring Ave

Dr John M Denison SS

Designated Catchment School
Grades 9 to 12
135 Bristol Rd

PARKS & REC.

This home is located in park heaven, with 4 parks and a long list of recreation facilities within a 20 minute walk from this address.



Northwest Quadrant Woodlot

204 Woodspring Ave



2 min

Environmental Park

332 Woodspring Ave



10 min

Woodland Hill Labyrinth Park

45 Ford Wilson Boulevard



7 min

FACILITIES WITHIN A 20 MINUTE WALK

3 Playgrounds 3 Sports Fields
1 Basketball Court 3 Trails
1 Picnic Facilities 1 Amphitheatre
1 Multi-Use Pad

TRANSIT

Public transit is at this home's doorstep for easy travel around the city. The nearest street transit stop is only a minute walk away and the nearest rail transit stop is a 46 minute walk away.



Nearest Rail Transit Stop

Newmarket GO



Nearest Street Level Transit Stop

Woodspring Av / Ray Snow Blvd



1 min

SAFETY

With safety facilities in the area, help is always close by. Facilities near this home include a fire station, a hospital, and a police station within 3.91km.



Southlake Regional Health Centre

596 Davis Dr



Fire Station

125 McCaffrey Rd



Police Station

240 Prospect Street

CONVENIENCE

This home is located near everyday amenities to make your daily errands easier.



Coffee



Gym



Grocery



Gas Station

Disclaimer: These materials have been prepared for shawn@eamzold.com and are not intended to solicit buyers or sellers currently under contract with a brokerage. By accessing this information you have agreed to our terms of service, which are hereby incorporated by reference. This information may contain errors and omissions. You are not permitted to rely on the contents of this information and must take steps to independently verify its contents with the appropriate authorities (school boards, governments etc.). As a recipient of this information, you agree not to hold us, our licensors or the owners of the information liable for any damages, however caused.



FABULOUS WOODLAND HILL FAMILY HOME ON A GREAT STREET

This Move In Ready 4 Bedroom Home Has Everything Done For You To Just Move In And Enjoy. The Open Concept Layout Is An Entertainers Dream With Several Changes Made By The Seller When The Home Was Built. The Kitchen Is A Great Spot For Large Family Dinners And There Is A Walkout To A Stunning Back Deck. This Area Has So Many Amazing Parks, Trails, Transit, And Top Ranked Schools For You To Enjoy.

Includes: This Great Home Includes Gourmet Stainless Steel Appliances (Fridge, Stove, Built In Microwave, Built In Dishwasher), Washer, Dryer, Garage Door Opener and Remotes, All Electrical Light Fixtures, All Window Coverings, Central Vacuum, Water Softener, Shutters, Trek Deck, Custom Landscaping, Soundproof Music Studio, And More!

Lot Size: 35.10 x 86.94 Feet | Taxes: \$4,989.84 / 2018

Royal LePage Your Community Realty Brokerage does not warrant or guarantee the information in this feature sheet.