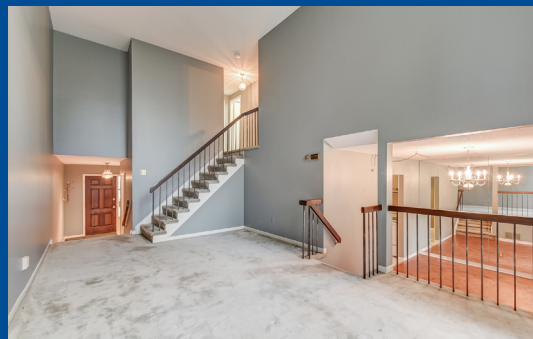
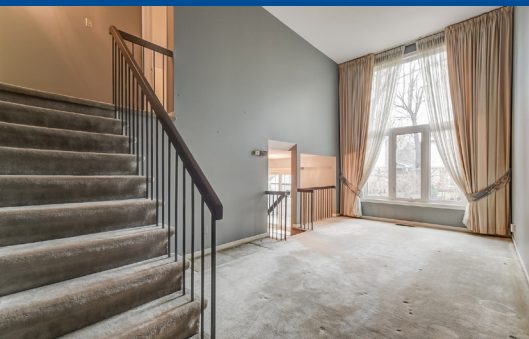


# 184 Castle Rock Drive

www.184castlerock.com



Shawn Zigelstein  
Sales Representative



ROYAL LEPAGE  
**CHAIRMAN'S CLUB**  
NATIONAL TOP 1%  
2012-2017

## TEAM ZOLD

Your Home • Your Life • Your Realtors

*Working For You!*

905.731.2000  
www.teamzold.com

Your Community™  
REALTY



BROKERAGE INDEPENDENTLY OWNED & OPERATED

184 Castle Rock Dr, Richmond Hill, ON L4C 5H6, Canada

**SCHOOLS**

With excellent assigned and local public schools very close to this home, your kids will get a great education in the neighbourhood.



**Roselawn PS**

Designated Catchment School  
Grades 4 to 8  
422 Carrville Rd  
0.76 KM

**Adrienne Clarkson PS**

Designated Catchment School  
Grades 1 to 8  
68 Queens College Dr  
4.42 KM

**Alexander MacKenzie HS**

Designated Catchment School  
Grades 9 to 12  
300 Major MacKenzie Dr W  
2.07 KM

**Ross Doan PS**

Designated Catchment School  
Grades PK to 5  
101 Weldrick Rd W  
1.1 KM

**Académie de la Moraine**

Designated Catchment School  
Grades PK to 6  
115 George St  
15.82 KM

**ÉS Norval-Morrisseau**

Designated Catchment School  
Grades 9 to 12  
51 Wright St  
3.03 KM

**PARKS & REC.**

This home is located in park heaven, with 4 parks and 9 recreation facilities within a 20 minute walk from this address.



**Tannery Park**

209 Castle Rock Dr  
0.16 KM



2 min

**Carrville Park**

Okanagan Dr and Keremeos Ct  
0.38 KM



5 min

**Shaw Parkette**

Bathurst St and Shaw Blvd  
0.32 KM



4 min

**FACILITIES WITHIN A 20 MINUTE WALK**

4 Playgrounds    2 Tennis Courts  
1 Ball Diamond    1 Trail  
1 Picnic Facilities

**TRANSIT**

Public transit is at this home's doorstep for easy travel around the city. The nearest street transit stop is only a 3 minute walk away and the nearest rail transit stop is a 41 minute walk away.

**Nearest Rail Transit Stop**

Langstaff GO  
3.09 KM

**Nearest Street Level Transit Stop**

Weldrick Rd / Annette Gate  
0.25 KM



3 min

**SAFETY**

With safety facilities in the area, help is always close by. Facilities near this home include a hospital, a fire station, and a police station within 2.12km.

**Mackenzie Richmond Hill Hospital**

10 Trench St  
2 KM

**Fire Station**

191 Major Mackenzie Drive West  
2.02 KM

**Police Station**

171 Major Mackenzie Drive West  
2.12 KM

**CONVENIENCE**

This home is located near everyday amenities to make your daily errands easier.

**Coffee**

0.6 KM

**Gym**

1.4 KM

**Grocery**

0.7 KM

**Gas Station**

1.9 KM



Disclaimer: These materials have been prepared for shaw@realestate.com and are not intended to solicit buyers or sellers currently, under contract with a brokerage. By accessing this information you have agreed to our terms of service, which are hereby incorporated by reference. This information may contain errors and omissions. You are not permitted to rely on the contents of this information and must take steps to independently verify its contents with the appropriate authorities (school boards, governments, etc.). As a recipient of this information, you agree not to hold us, our licensors or the owners of the information liable for any, damages, howsoever caused.

HoodQ



\*\*\*PRIME RICHVALE HOME READY FOR YOU TO MAKE IT YOURS\*\*\*

This Solid Home Has Had All Of The Major Work Completed For You, Now It's Time For You To Renovate The Interior To Your Favorite Choices. Updates Including Roof, Some Windows, Furnace, A/C, Walk Out Doors, Siding, And So Much More - Head To The Designer And Move In To This Great Area Close To Schools, Parks, Community Center, Transit And Shopping. This Home Has An Amazing Layout And Would Look Amazing When Completed.

Lot Size: 35 x 120 feet    Taxes: \$4,510.19 / 2018

Royal LePage Your Community Realty Brokerage does not warrant or guarantee the information in this feature sheet.